




VANCOUVER & VICTORIA TERMINAL OPERATIONS

AIDAN KYNE

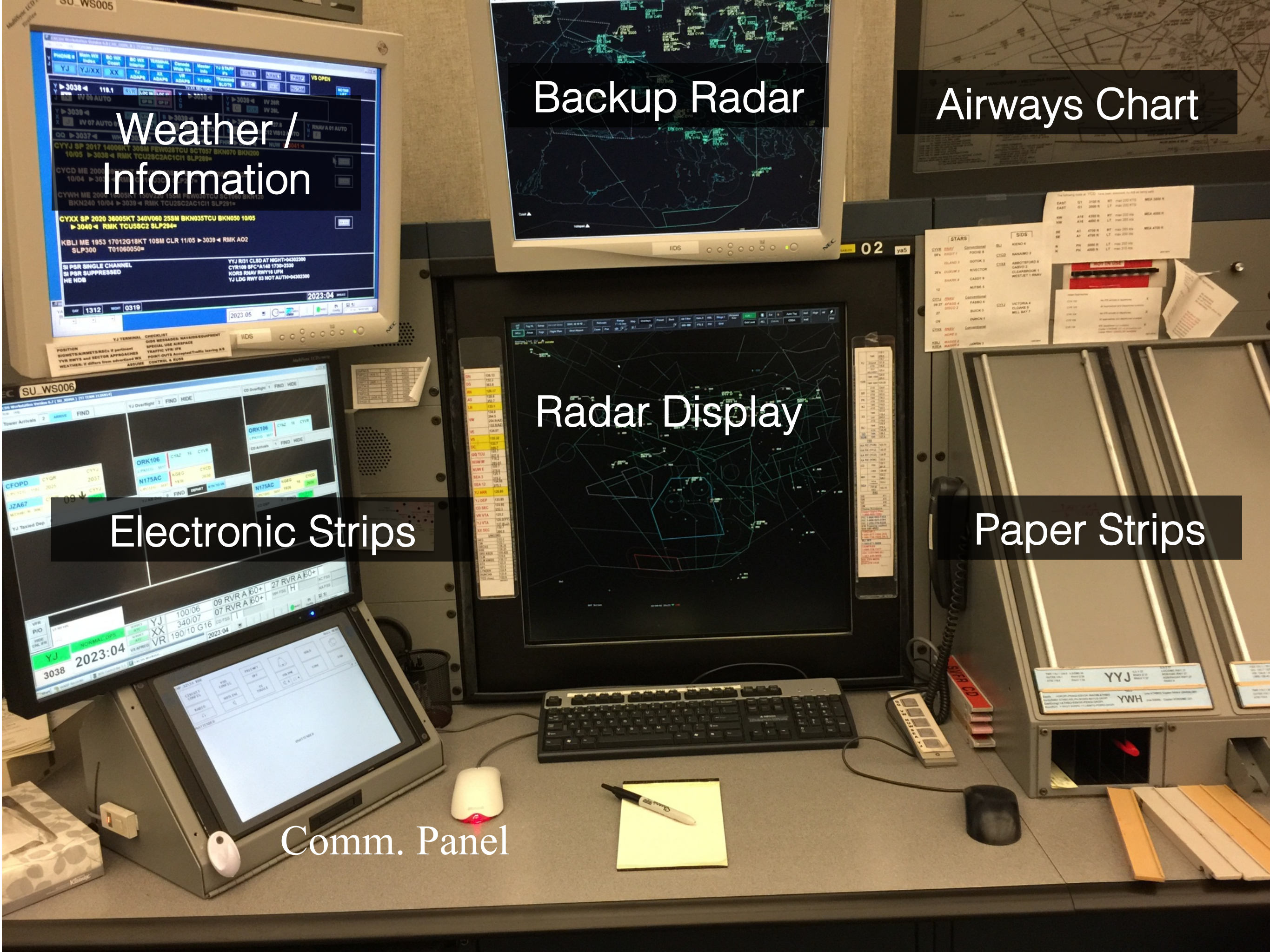
VANCOUVER ACC
7421 135th ST
SURREY BC







140 CONTROLLERS
3 ENROUTE SPECIALTIES
2 TERMINAL SPECIALTIES



Weather/
Information

Backup Radar

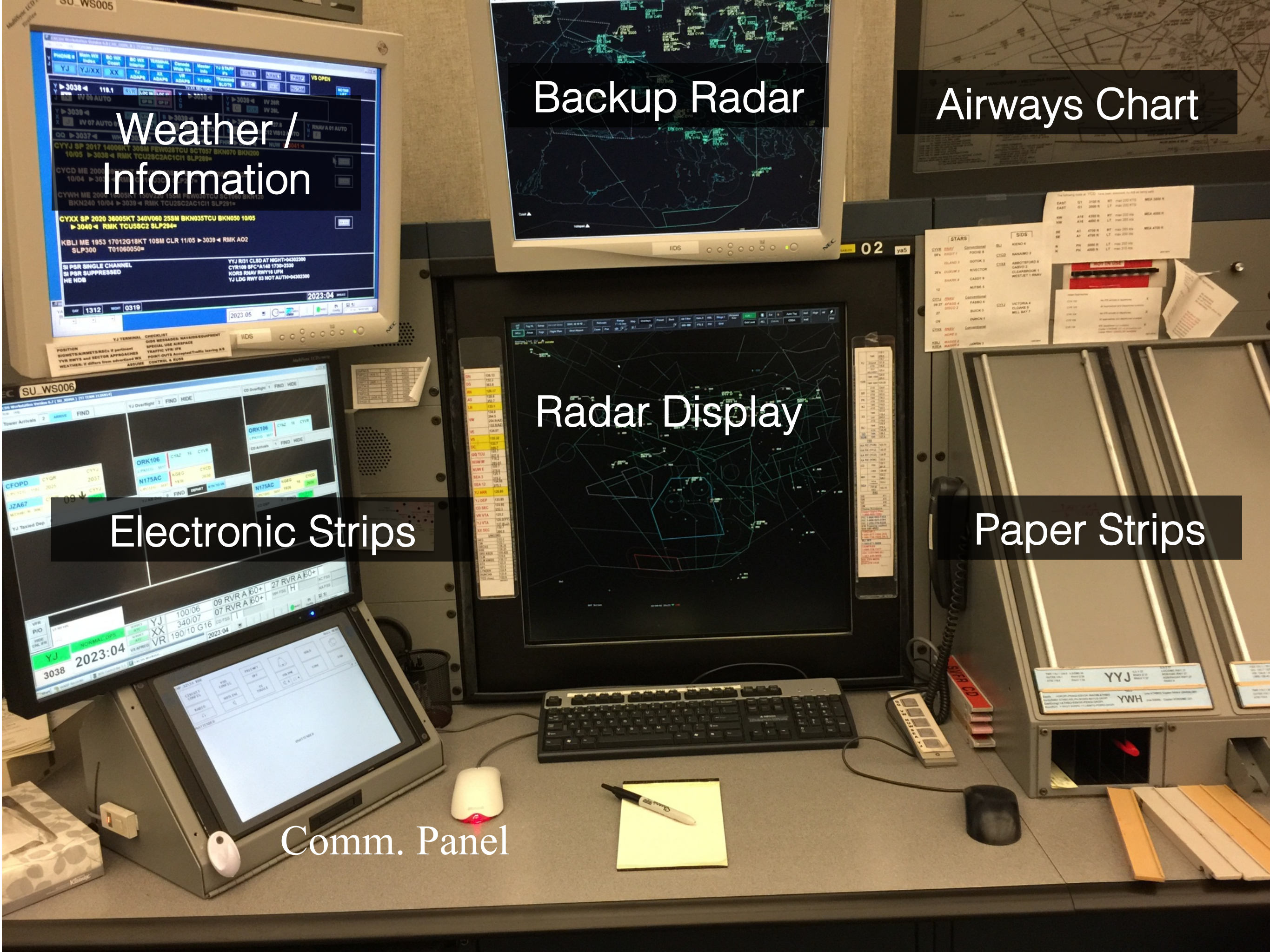
Airways Chart

Radar Display

Electronic Strips

Paper Strips

Comm. Panel



Weather/
Information

Backup Radar

Airways Chart

Radar Display

Electronic Strips

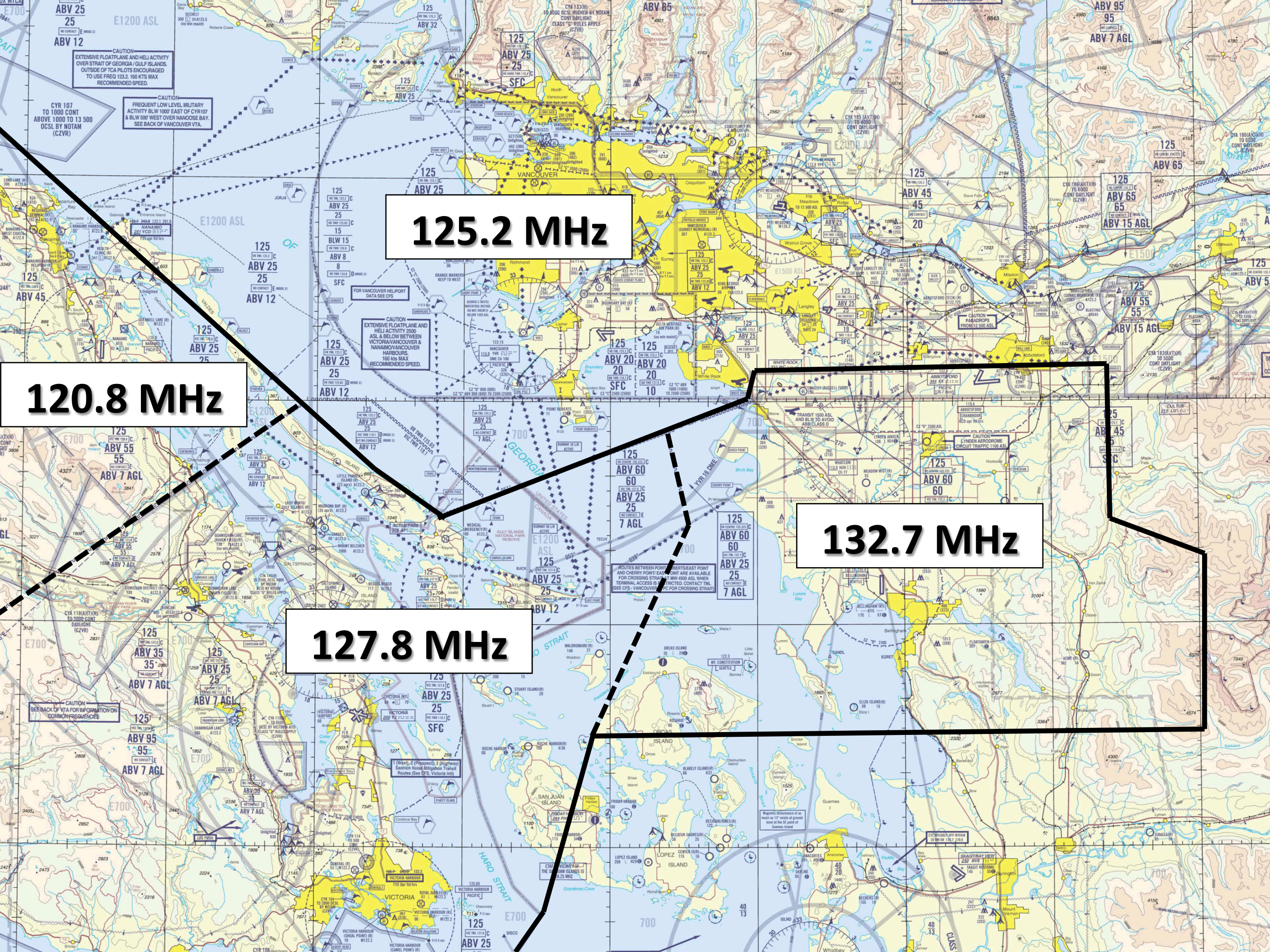
Paper Strips

Comm. Panel



VANCOUVER TERMINAL

VICTORIA TERMINAL



120.8 MHz

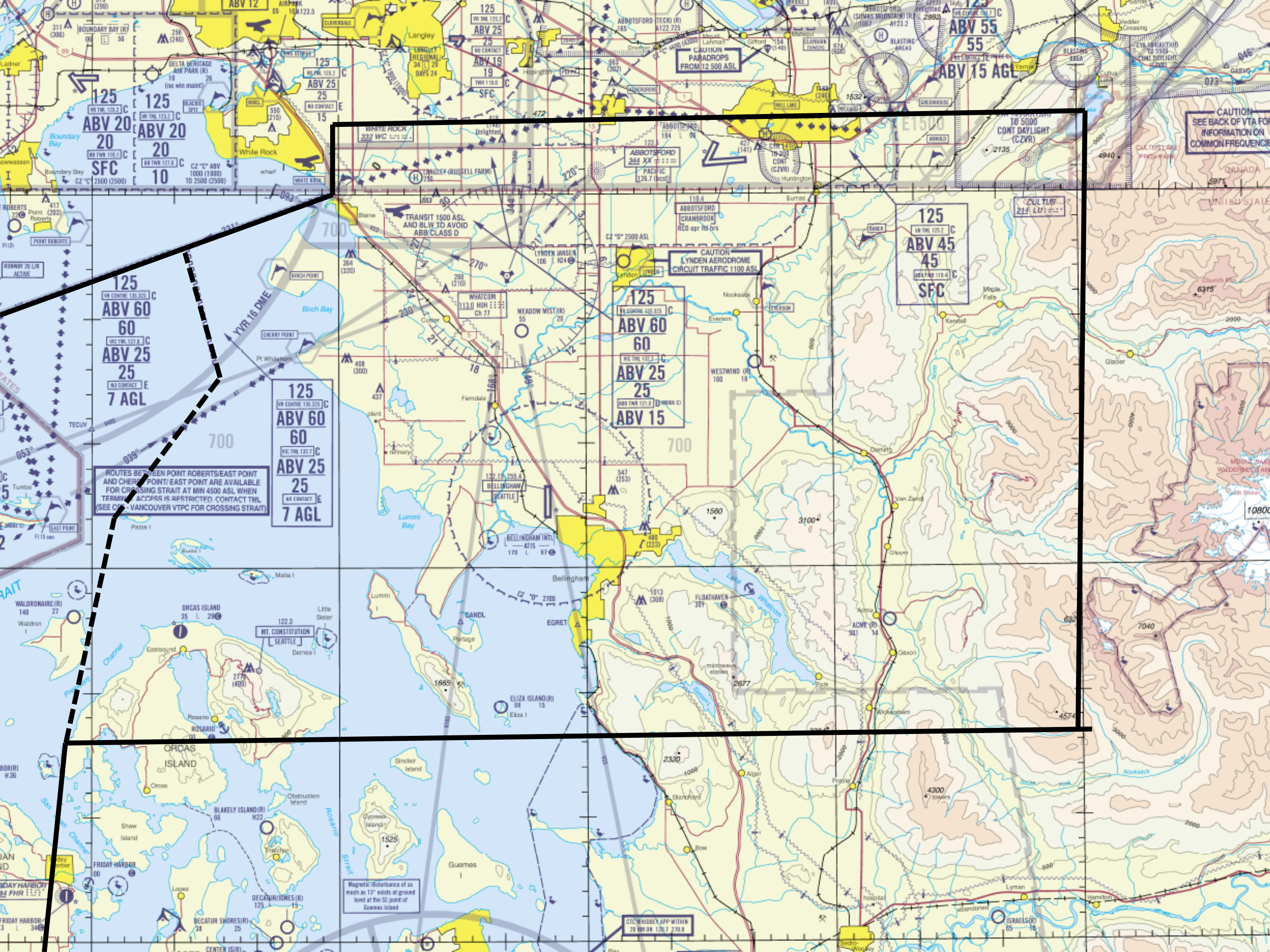
125.2 MHz

127.8 MHz

132.7 MHz

Sea Island Radar

Victoria Radar



CAUTION
SEE BACK OF VTA FOR
INFORMATION ON
COMMON FREQUENCIES

ABV 55
55
ABV 15 AGL

125
ABV 45
45
SFC

125
ABV 60
60
ABV 25
25
ABV 15

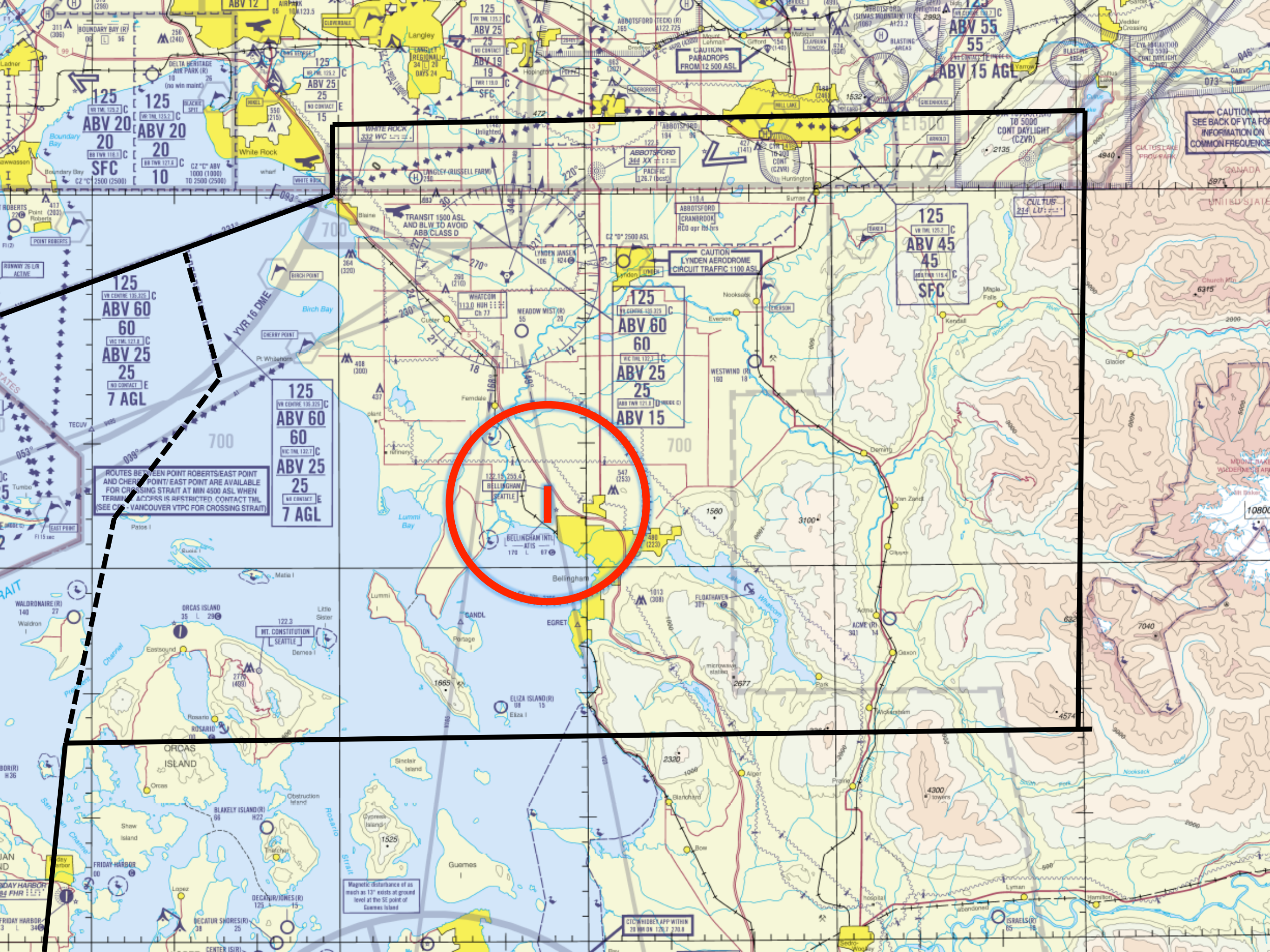
125
ABV 60
60
ABV 25
25
7 AGL

125
ABV 60
60
ABV 25
25
7 AGL

ROUTES BETWEEN POINT ROBERTS/EAST POINT
AND CHERRY POINT/EAST POINT ARE AVAILABLE
FOR CROSSING STRAIT AT MIN 4500 ASL WHEN
TERMINAL ACCESS IS RESTRICTED. CONTACT TML
(SEE CHART VANCOUVER VTPC FOR CROSSING STRAIT)

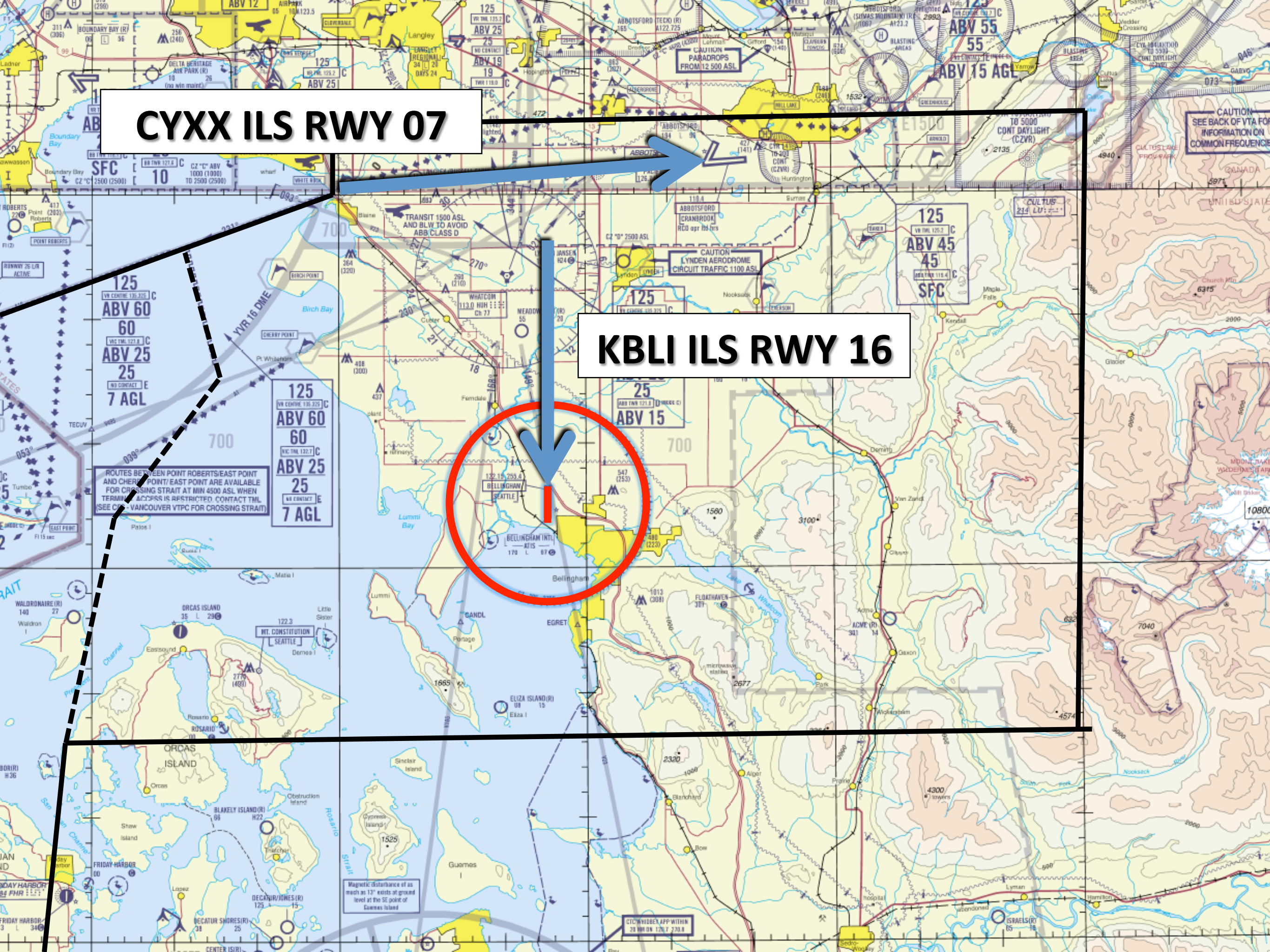
Magnetic disturbance of as
much as 12° exists at ground
level at the SE point of
Guemes Island

ETC WIDE AREA WITHIN
20 NM ON 120.7, 230.8



CYXX ILS RWY 07

KBLI ILS RWY 16

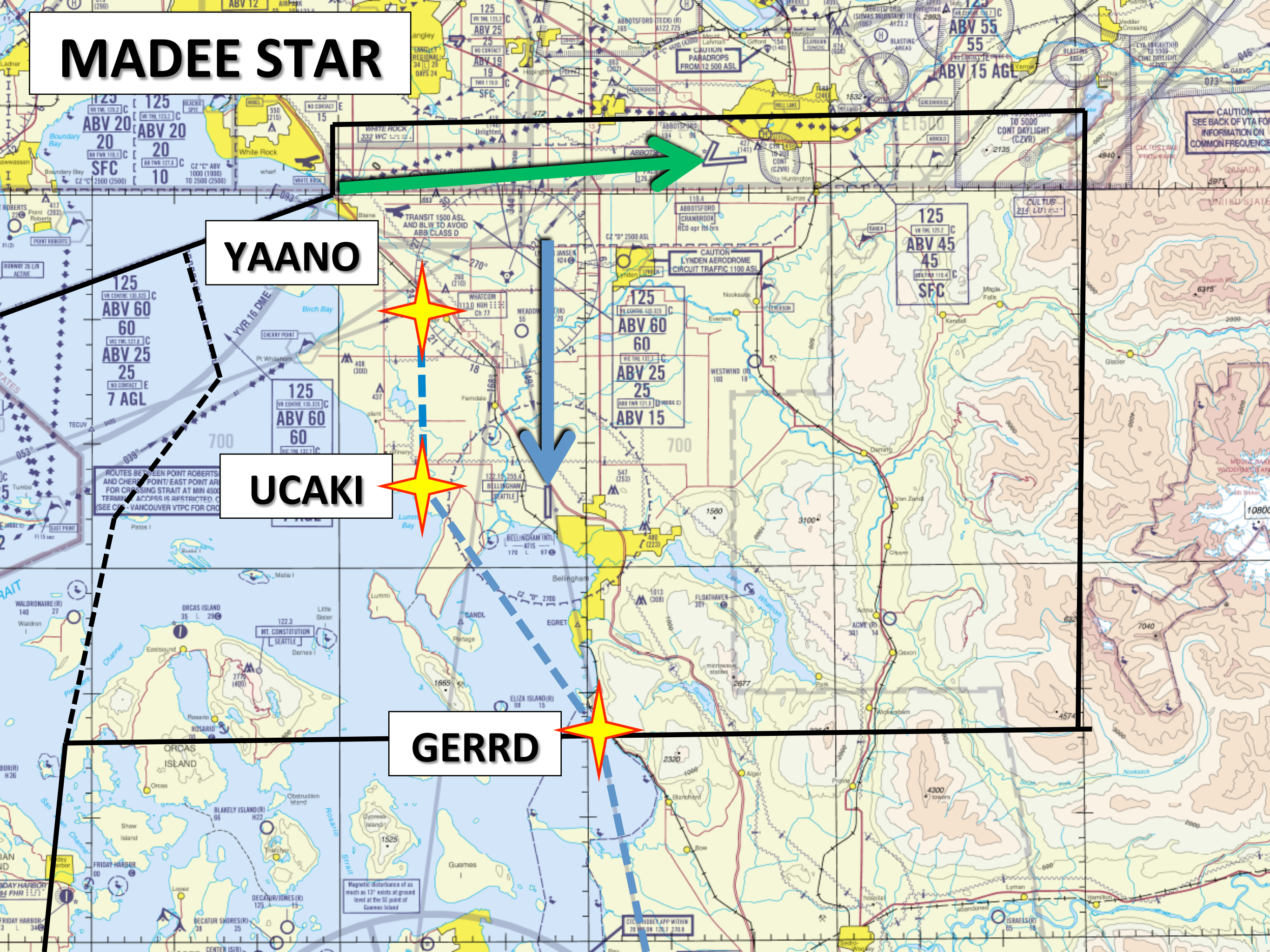


MADEE STAR

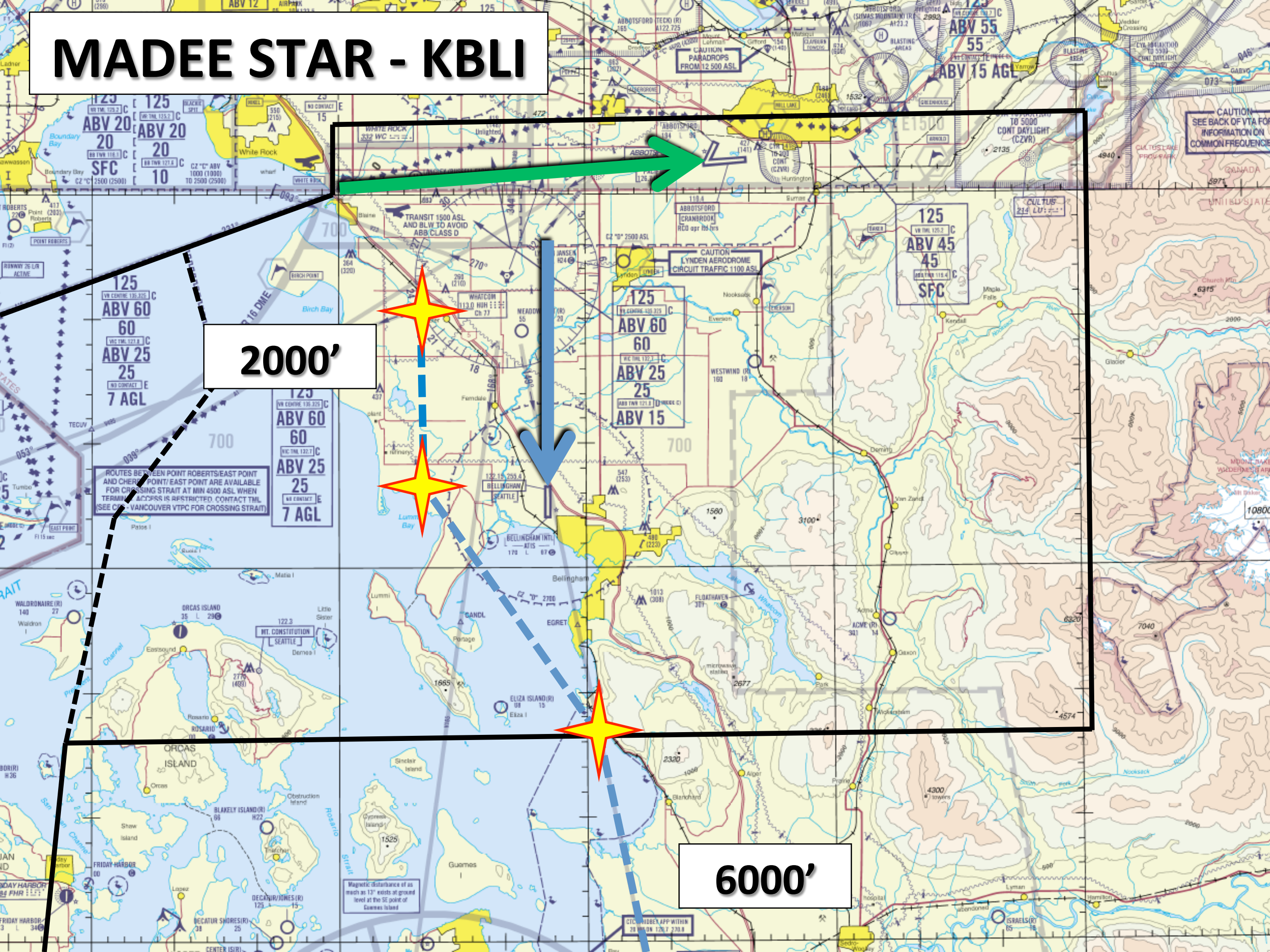
YAANO

UCAKI

GERRD



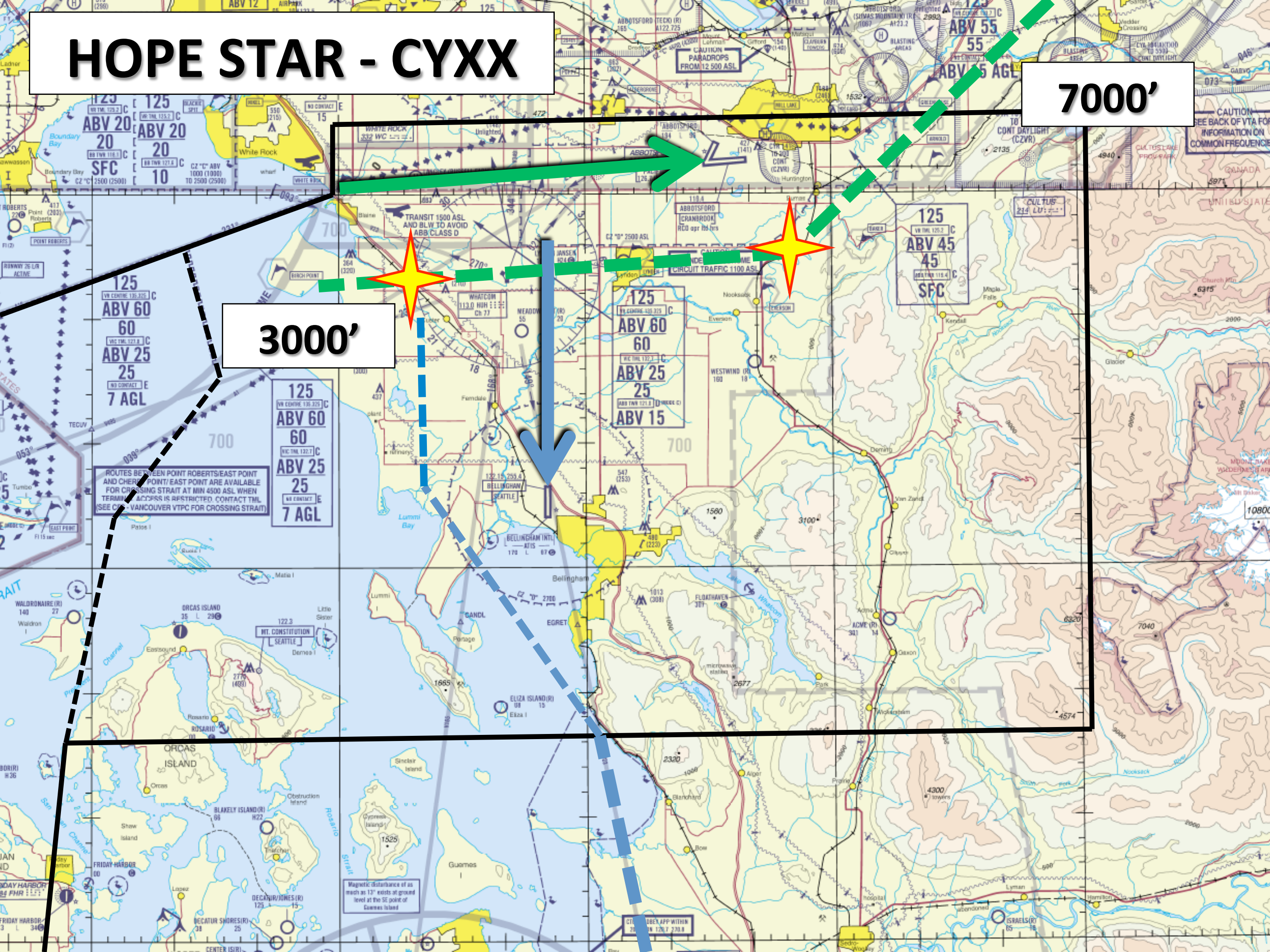
MADEE STAR - KBLI



HOPE STAR - CYXX

7000'

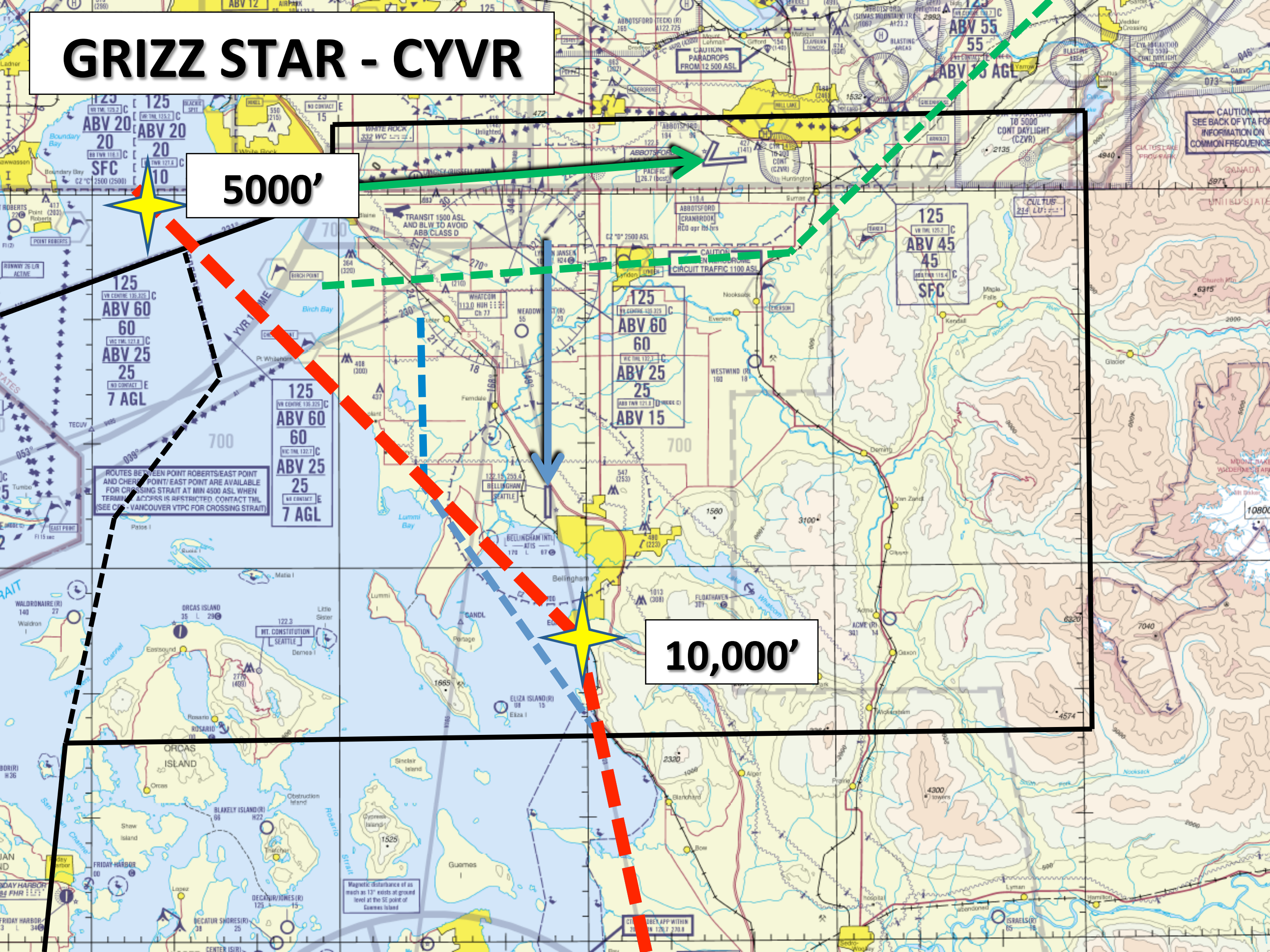
3000'



GRIZZ STAR - CYVR

5000'

10,000'



ABBOTSFORD AIRSHOW



ABBOTSFORD AIRSHOW

- **TFR – 6NM RADIUS UP TO FL180**
- **YXX TOWER IS APPROVING AUTHORITY**
- **SECOND WEEKEND IN AUGUST**
- **IFR / VFR FLIGHTS ACCOMMODATED BTW**
AIRSHOW PERFORMERS

IFR FLIGHT TRAINING



604-586-4592

FLYING IN CANADA



CANADIAN DICTIONARY

- **“TERMINAL” OR “ARRIVAL” = “APPROACH”**
- **“RADAR IDENTIFIED” = “RADAR CONTACT”**
- **“CLEARED ENROUTE” = “FREQUENCY CHANGE APPROVED”**
- **“LINE-UP RWY 09” = “POSITION & HOLD”**
- **“WHEN READY” = “PILOT’S DISCRETION”**

RESOURCES

- **TRANSPORT CANADA AERONAUTICAL INFORMATION MANUAL - ONLINE**
- **CANADA FLIGHT SUPPLEMENT = A/FD**
- **VANCOUVER VTA CHART**
- **VFR NAVIGATION CHART = SECTIONAL**
- **NAV CANADA WX / NOTAM ONLINE**

KAMLOOPS FLIGHT INFORMATION CENTRE



“PACIFIC RADIO”

KAMLOOPS

FLIGHT INFORMATION CENTRE

- **FLIGHT INFORMATION SERVICE ENROUTE (FISE)**
- **FLIGHT PLANNING / WX BRIEFING**
- **POSITION REPORTS**
- **COMM SEARCH / VFR ALERTING**
- **1-866-WX BRIEF (CAN) 1-866-541-4101 (USA)**

“PACIFIC RADIO”

FLIGHT PLANS

- **REQUIRED FOR ALL VFR FLIGHTS LONGER THAN 25NM**
- **REQUIRED FOR CROSS-BORDER FLIGHTS**
- **IFR AIRCRAFT CAN KEEP FLIGHT PLAN OPEN AFTER CANCELLING IFR (IFR ALERTING)**
- **1-866-WX-BRIEF (CAN) 1-866-541-4101 (USA)**

CLASS B AIRSPACE

- ABOVE 12,500 AND BELOW FL180
- **FLIGHT PLAN & CLEARANCE FOR ENTRY**
- TWO-WAY RADIO / MODE C
- SEPARATION APPLIED TO ALL AIRCRAFT
- VFRs OPERATE AT IFR ALTITUDES

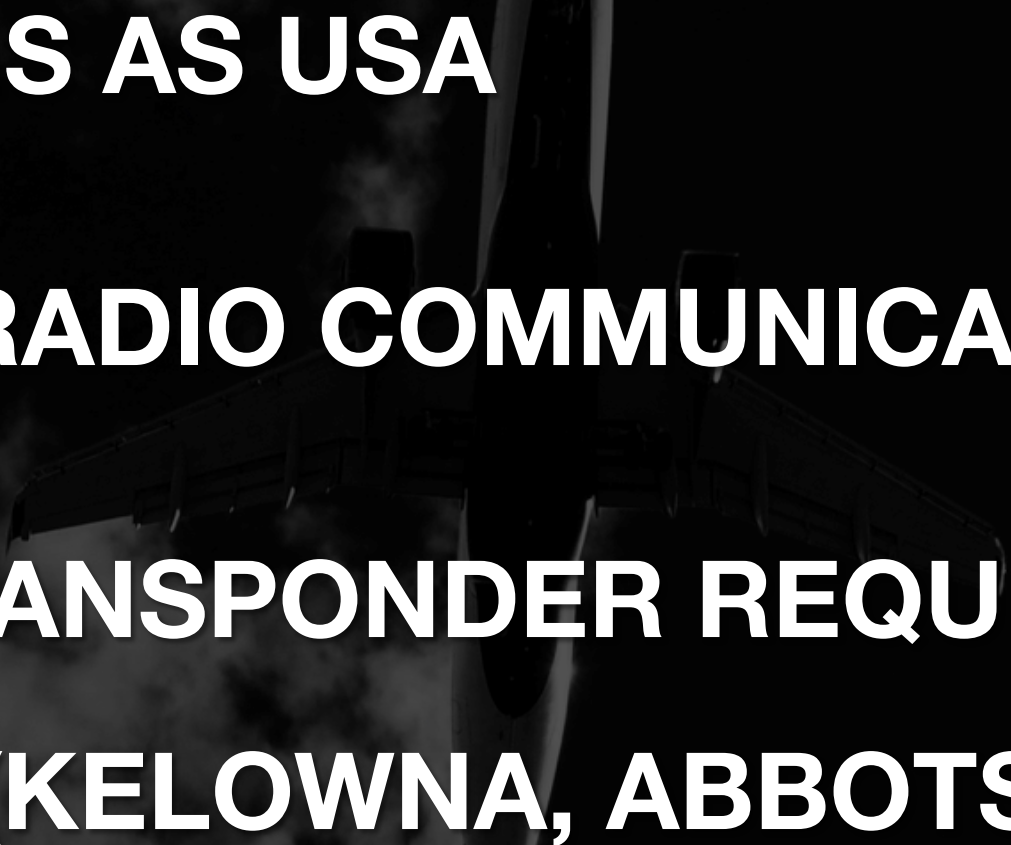
CLASS C AIRSPACE

- **CLEARANCE FOR ENTRY**
- **TWO-WAY RADIO / MODE C X-PDR**
- **SFC TO 12,500 – VANCOUVER, VICTORIA,
BOUNDARY BAY, ABBOTSFORD, LANGLEY,
PITT MEADOWS, VANCOUVER HARBOUR**

CLASS C AIRSPACE

- **SEPARATION APPLIED BETWEEN ALL AIRCRAFT (LOWER MINIMA THAN BRAVO)**
- **STRICT ADHERENCE TO VFR ALTITUDES**
- **ROUTINGS WITHIN VICTORIA TERMINAL AIRSPACE ARE FLEXIBLE**

CLASS D AIRSPACE

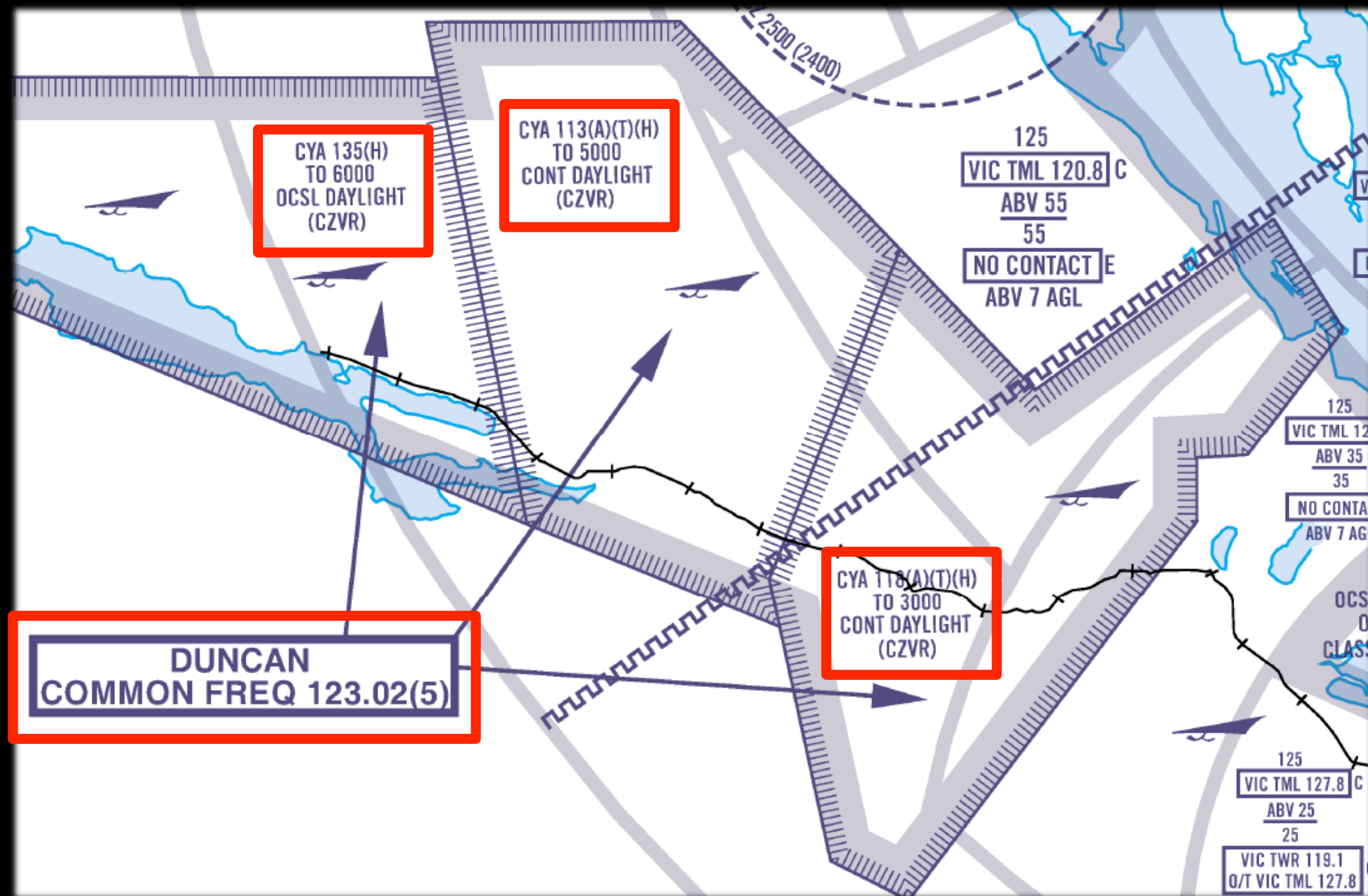
- **SAME RULES AS USA**
 - **TWO-WAY RADIO COMMUNICATIONS**
 - **MODE C TRANSPONDER REQUIRED WHERE SPECIFIED (KELOWNA, ABBOTSFORD)**
- 

CLASS E CONTROL ZONE

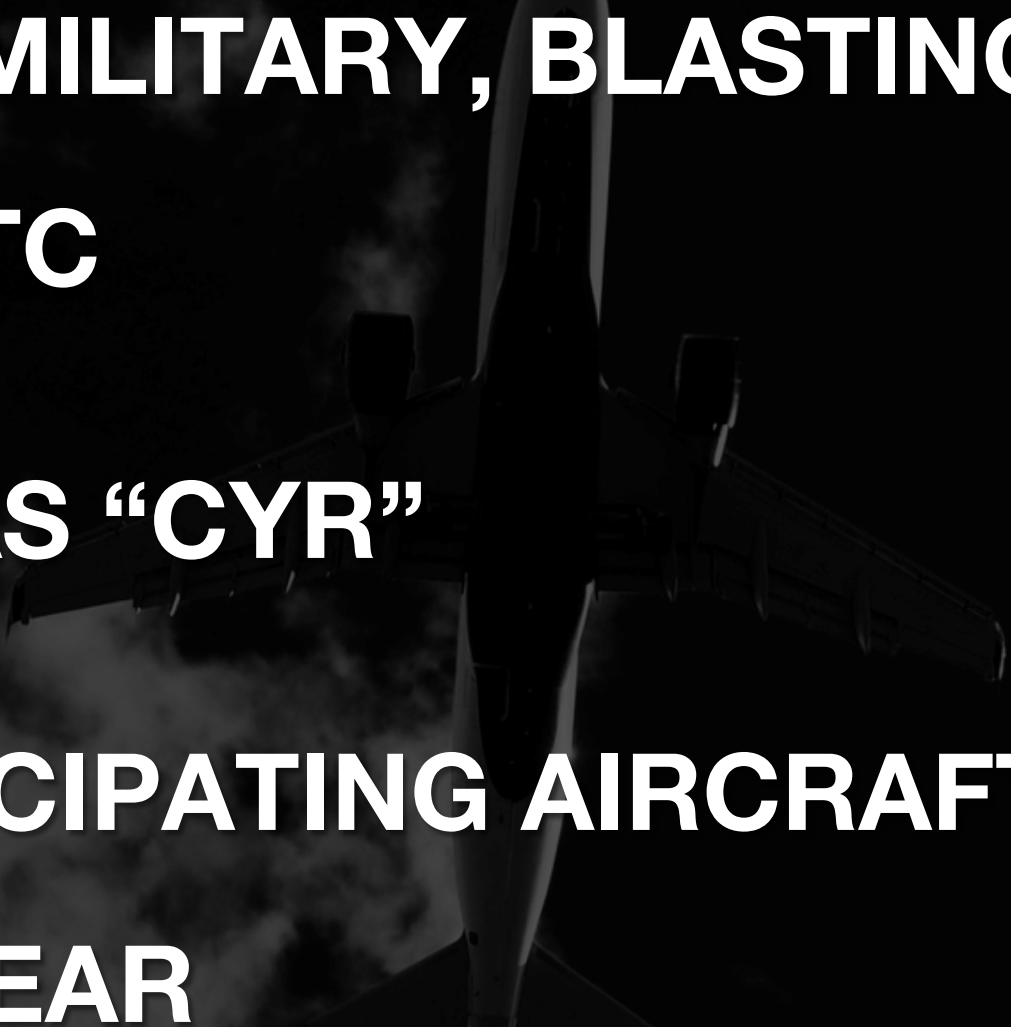
- **USUALLY SERVED BY FSS**
- **ADVISORY ONLY – NO CONTROL SERVICE**
- **TWO-WAY RADIO – MANDATORY FREQ**
- **IFR CLEARANCE RELAYED BY FSS**
- **NANAIMO, VICTORIA HARBOUR, TOFINO**

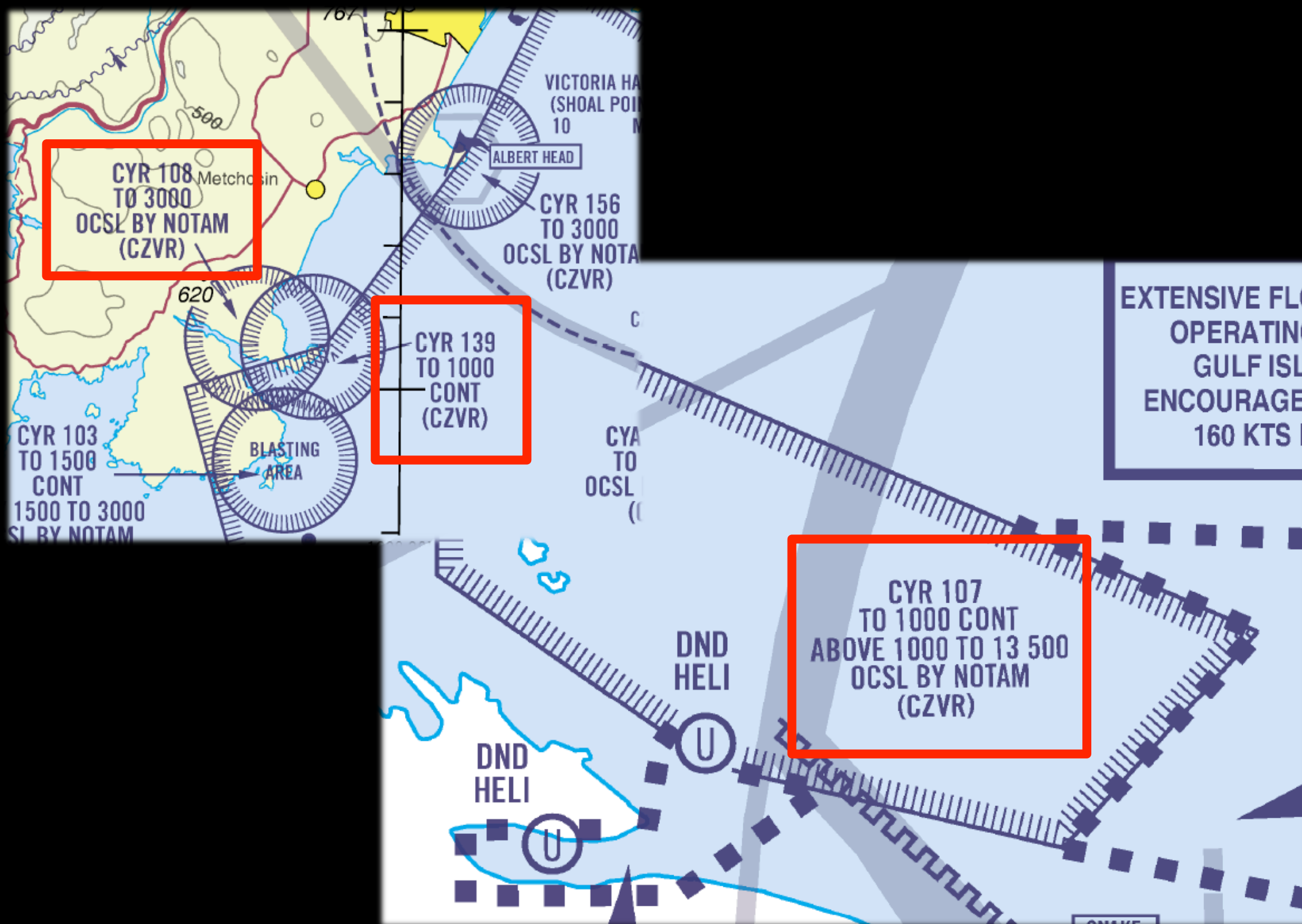
ADVISORY AIRSPACE

- **USED FOR HANG GLIDING, FLIGHT TRAINING, AEROBATICS, SKYDIVING ETC**
- **CHARTED AS “CYA”**
- **NON-PARTICIPATING VFR AIRCRAFT MAY ENTER AT THEIR DISCRETION**
- **BROADCAST ON COMMON FREQUENCY**



RESTRICTED AIRSPACE

- **USED FOR MILITARY, BLASTING, OVER PRISONS ETC**
 - **CHARTED AS “CYR”**
 - **NON-PARTICIPATING AIRCRAFT MUST REMAIN CLEAR**
- 



CYR 108
TO 3000
OCSL BY NOTAM
(CZVR)

CYR 139
TO 1000
CONT
(CZVR)

CYR 156
TO 3000
OCSL BY NOTAM
(CZVR)

CYR 103
TO 1500
CONT
1500 TO 3000
OCSL BY NOTAM

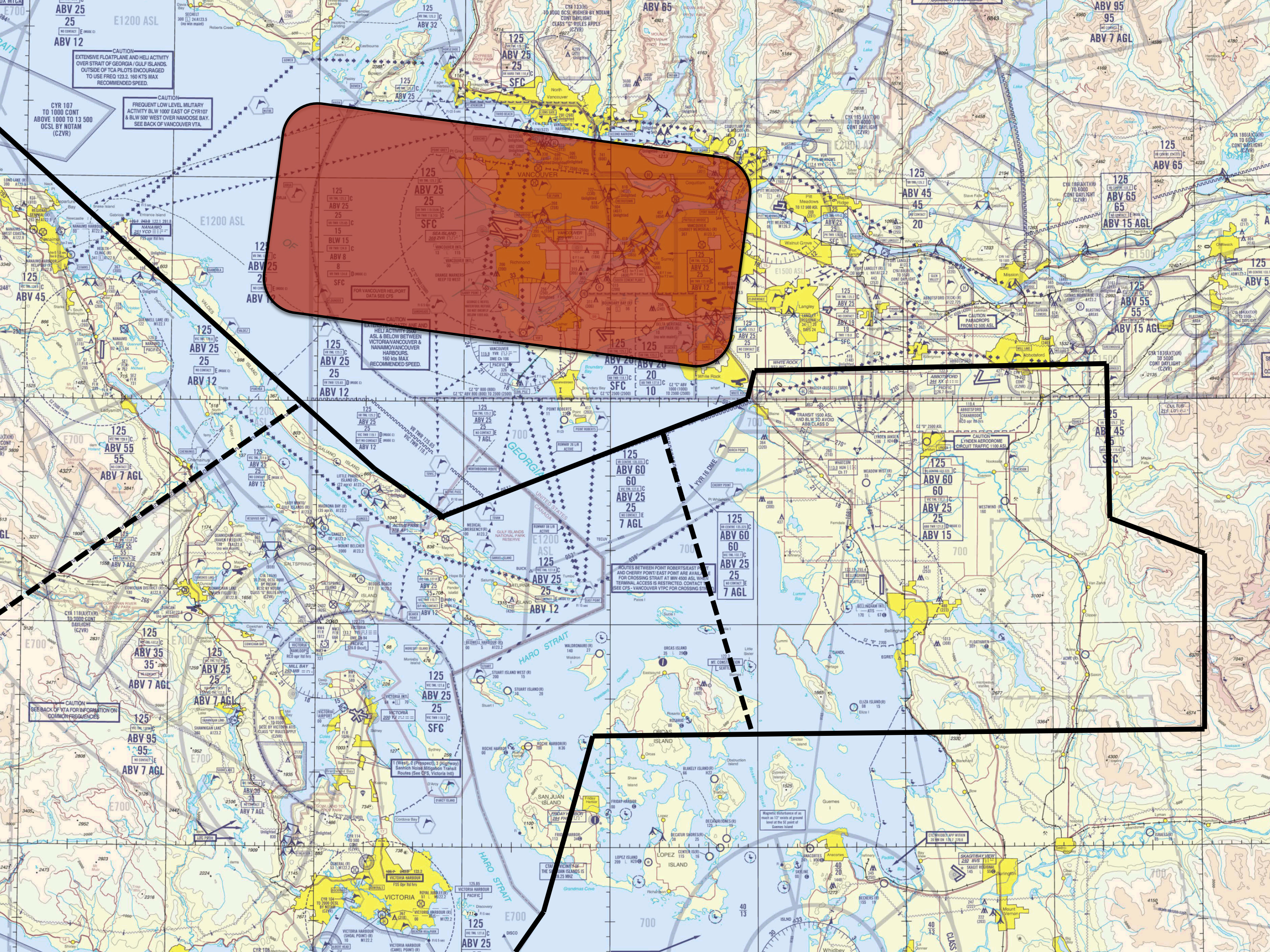
EXTENSIVE FLO
OPERATING
GULF ISL
ENCOURAGE
160 KTS P

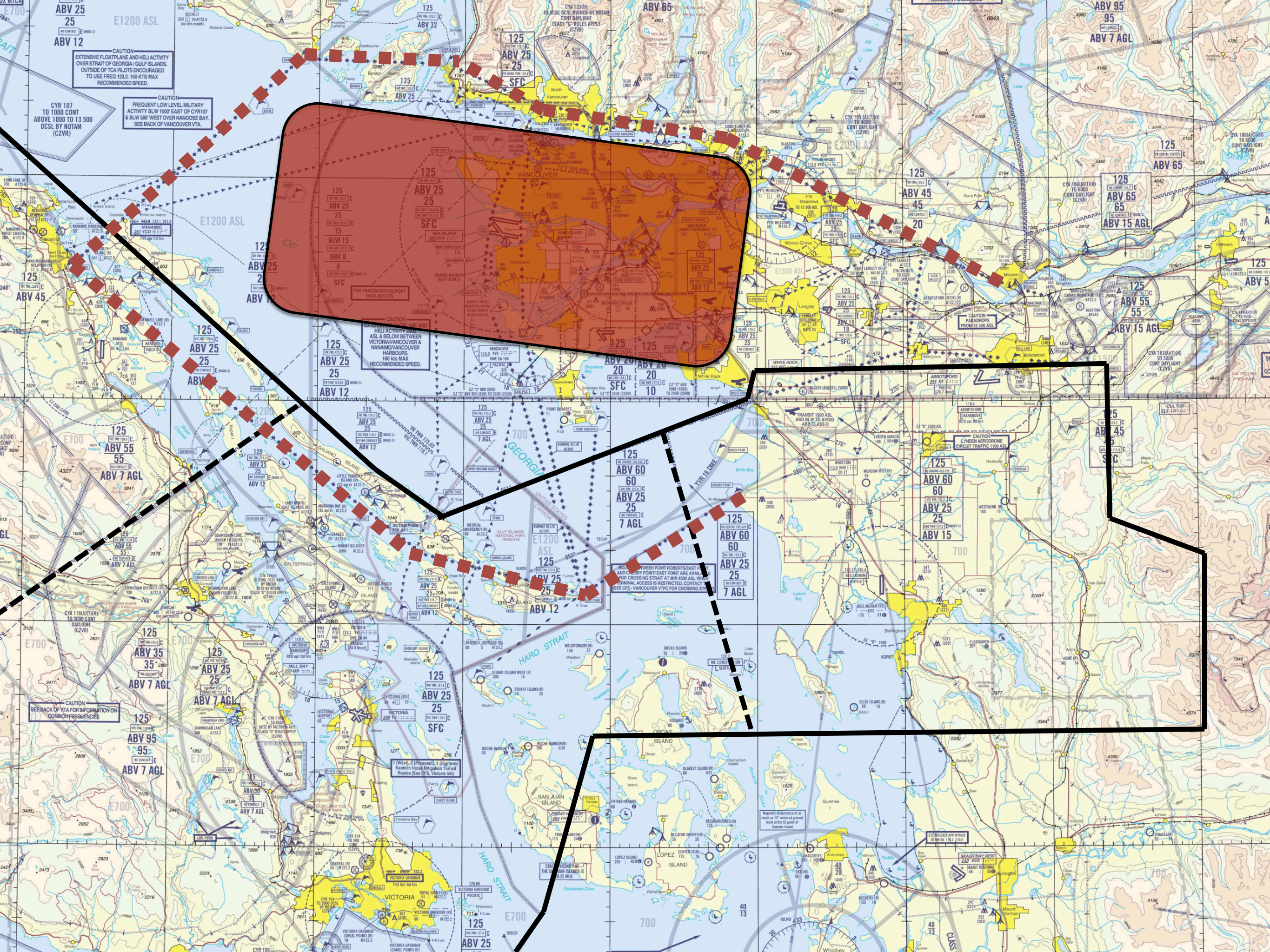
CYR 107
TO 1000 CONT
ABOVE 1000 TO 13 500
OCSL BY NOTAM
(CZVR)

DND
HELI

DND
HELI

SNAKE





GOWER

STARKS

A topographic map of the N. Shore Route area. A white banner with the text "N. SHORE ROUTE" is overlaid diagonally across the map. The map shows various geographical features including Pit Lake, Silver Valley, and several roads. A red line with diamond markers indicates the route. The map also includes labels for "ABV 85" and "ABV 45".

CHERRY POINT

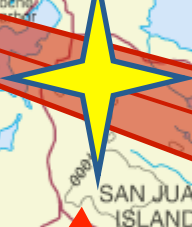
S. OF ACTIVE PASS

**EAST
POINT**

127.8 MHz

132.7 MHz

1 (West), 2 (Prospect), 3 (Highway)
Sannich Noise Mitigation Transit
Routes (See CFS, Victoria Intl)

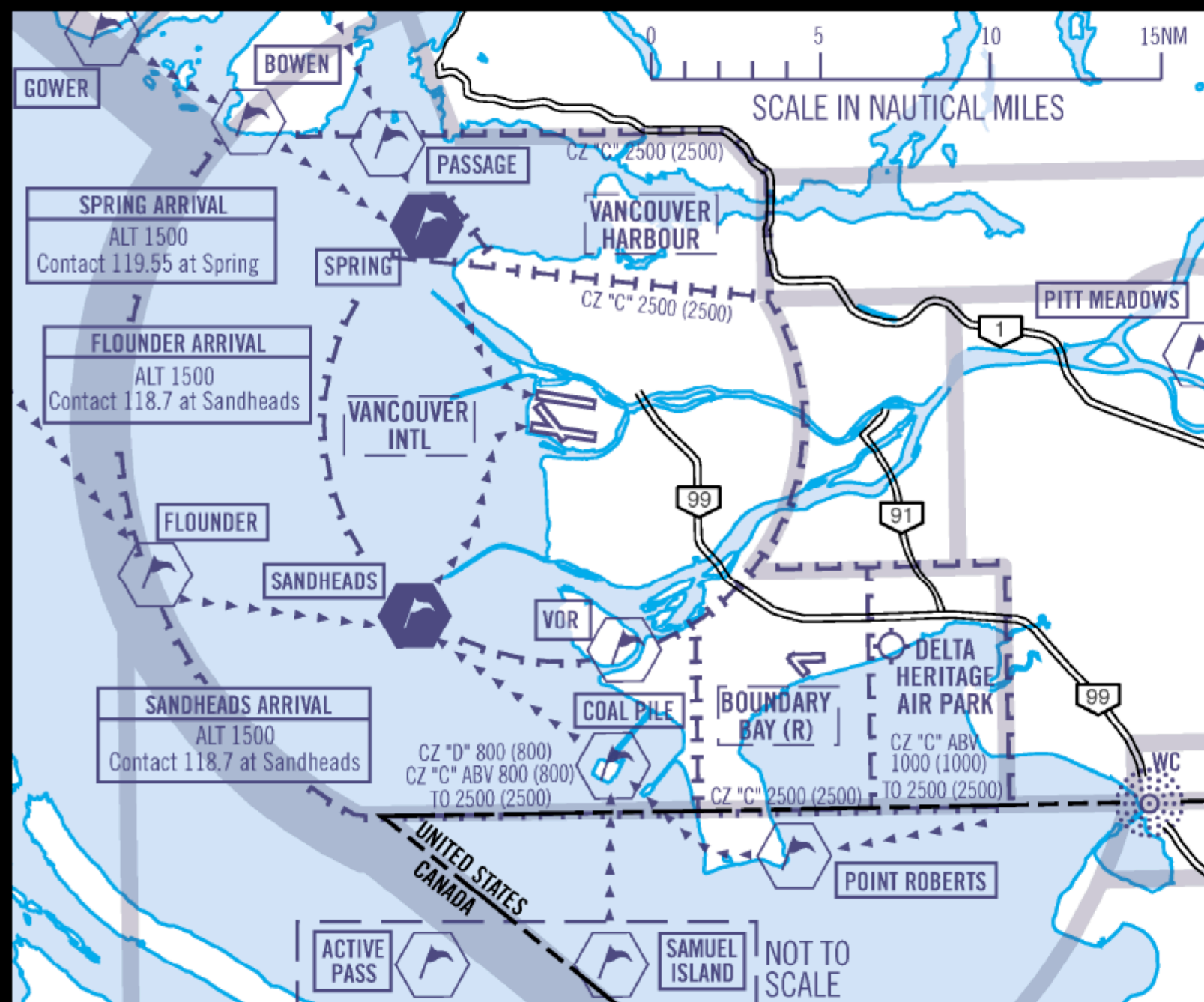


SAN JUAN ISLAND

FRIDAY HARBOR
284 F

**JET/ TURBOPROP JOINING FINAL
AT 2500 AND BELOW WHEN
RWY 27 ACTIVE**

VANCOUVER RWY 08 L/R ARRIVALS	ATIS	TML	TWR (OUTER)	TWR (NORTH)	TWR (SOUTH)	GND (NORTH)	GND (SOUTH)
	124.6	125.2	125.65 124.0	119.55	118.7	127.15	121.7



IFR TO ALASKA

8000' - 9000'

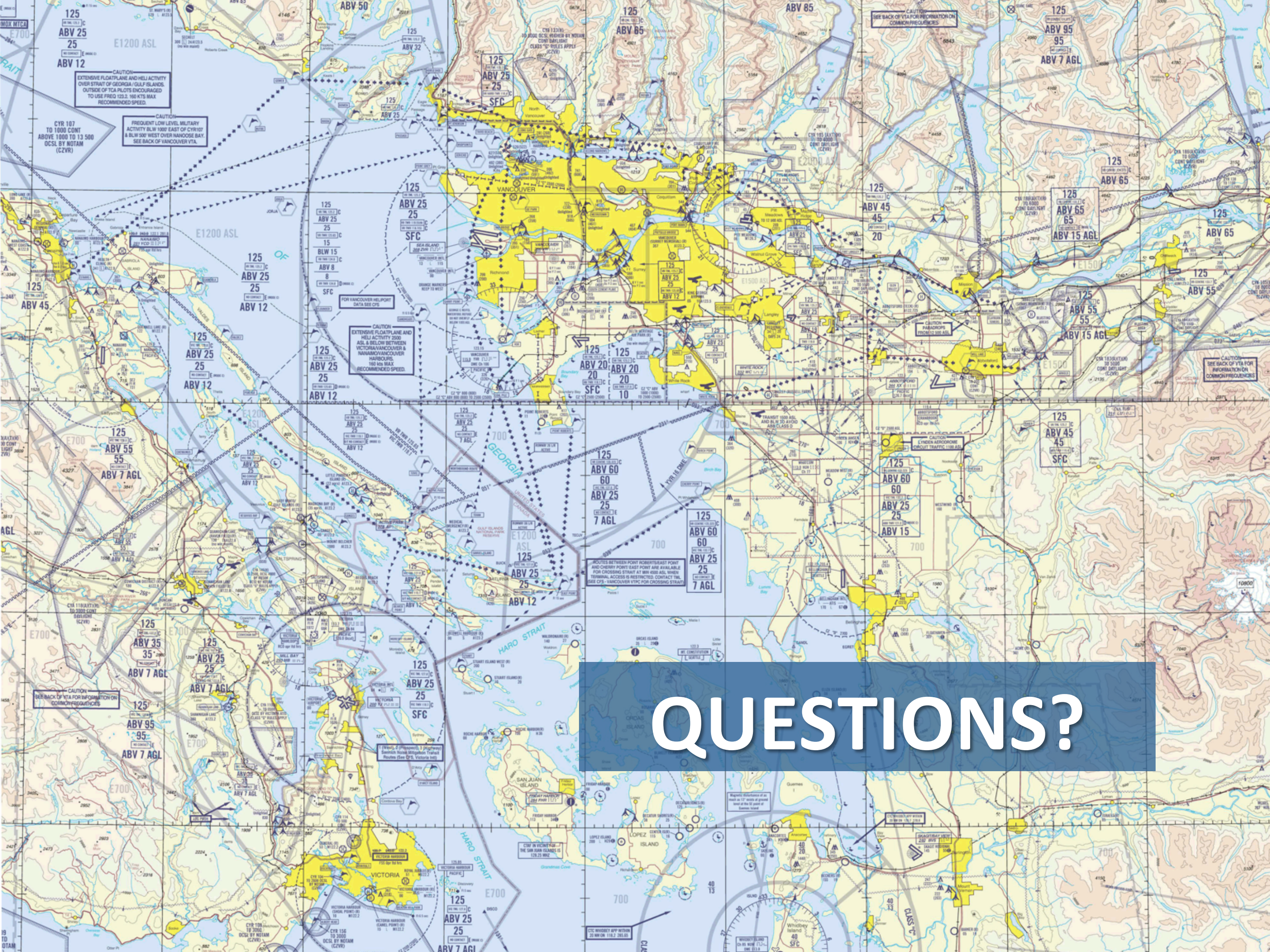
KBLI YYJ QQ YBL KELSY V347 YZT YJQ PR ANN...

10,000' – 15,000'

KBLI YYJ YZT YJQ PR ANN...

16,000' AND ABOVE

KBLI YYJ ANN...



QUESTIONS?



AIDAN KYNE

UNIT PROCEDURES SPECIALIST

VICTORIA TERMINAL – VANCOUVER ACC

kynea@navcanada.ca

604-598-4853

