



## President's Message

by Greg Bell

Well, 2008 is almost history. The Christmas party will be a lot of fun so I suggest you sign up early. I recently attended our 2009 planning meeting. We have some great programs lined up next year for our monthly meetings so if you don't normally attend I implore you to change your ways and come have dinner with us.



I recently flew down to Sanderson Field in Shelton and enjoyed Oysterfest 2008. Every year during the first weekend in October the Shelton Skookum Rotary Foundation puts this festival on. I don't need much of an excuse to fly somewhere but this one is really a lot of fun. Don't let the name fool you. There is a lot more than just oysters.

Oysterfest takes place at the Mason County Fairgrounds which are directly adjacent to the airport. You can park in the grass right off the runway and have VIP access to the fairgrounds entrance gate. This year there were already about a half dozen planes parked at the gate when I landed. Admission for adults this year was \$5, up from \$2 a few years ago, but still a bargain in my opinion.

Weather is fairly uncertain this time of year and the 1st day of Oysterfest on Saturday was quite harsh with high winds and heavy rains at times. Sunday, the day I chose, was marginal VFR but calm air. If the weather is decent this event makes a great Saturday morning flyout. Sanderson (KSHN) is only 53 NM from Paine.



This festival has a very small town feel to it. There is a plethora of different booths setup with a variety of food that is cooked and sold by various local community non-profit groups. Me and my passenger enjoyed oysters cooked several different ways (I don't care for raw ones!), shrimp, corn-on-the-cob, salmon, ice cream, etc. There are also burgers and lots of sweet goodies for non-seafood loving folks.

There are other attractions besides food. There is an assortment of live music. The premier event is the oyster shucking competition which is quite serious with some fairly hefty prize money and some expert shuckers. There is a seafood cook-off, art and photography competition, wine tasting, etc.

Hope to see you there next year.

## November Program: Year in Review and Elections

Narrator: Jim Faustina, our Safety and Education Chair  
A review of what happened last year and what is planned for 2009.

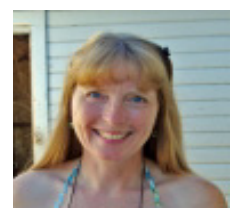
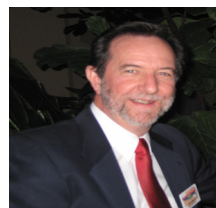
### 2009 Officer Nominees:

Narrator: Jim Faustina

President; Les Smith

VP; Dave Wheeler

Director Janis Wheeler



### Contents

President's Message	1
Officer contact	2
Call for Nominations	2
Call for Awards	2
Places to Go	3
News Briefs	4
Christmas Party RSVP	5
Calendar	6
Classifieds	6

**RSVP Required  
for Dinner  
by October 31st  
RSVP @**

**www.wpa-paine.org  
or call 425-388-5125  
ext 6**

**Next Newsletter deadline:  
November 16th  
newsletter@wpa-paine.org  
submission specs available on  
our web site**

**Nominations for President, Vice President, Secretary, Treasurer and Chapter Director(s)** for the ensuing year shall be made at the regular meeting in October of each year. The election of these officers shall take place along with additional nominations, if any, during the regular November meeting of the Chapter. Each Officer shall serve for a term of one year, assuming office in January

Section 1 – President.

The President shall be the Chief Executive Officer of the Chapter and shall preside at all meetings of the Chapter. He shall, with the assistance of the outgoing President, submit a report of the operations of his Chapter for the fiscal year to the State President of the Washington Pilots Association at their first regular meeting each year. He shall be an ex-officio member of all standing committees of the Chapter, sign all official documents, counter-sign all checks unless waived by the President, appoint all committees, and perform such duties as are required of this office.

Section 1a. The President, an implied member of the State WPA Board of Directors, shall attend annual state WPA Conventions and represent the Chapter as directed by the State WPA Board of Directors. The President's convention registration fee and basic convention lodging shall be paid from the Chapter treasury.

Section 2- Vice President.

In the absence or disability of the President, the Vice President shall exercise all powers and perform all duties of the Office of the President. The Vice President shall act as parliamentarian at all Chapter Meetings.

Section 3 – Secretary.

It shall be the duty of the Secretary of the Chapter to keep the minutes of all the meetings. The Secretary shall attend to the giving and serving of all notices of the Chapter, handle all correspondence, and is custodian of all documents and records, and shall keep a current list of all members.

Section 4 – Treasurer.

The Treasurer shall notify all members when dues are payable and receive all monies. The Treasurer shall notify the Membership Standing Committee Chairperson who will notify the applicant for membership of their election or rejection. The Treasurer shall give receipts for all monies and deposit same in the name of the Chapter in such repository as shall be selected by the members. The Treasurer shall keep correct records of the financial affairs of the Chapter, making monthly reports of said finances, have custody of all funds belonging to the Chapter and disburse same as authorized by the members. The Treasurer shall collect all annual dues and issue proper receipts to the members. He shall remit to the State Secretary or Treasurer within thirty days after receipt, appropriate dues together with the current name and address of each member paying dues and a statement as to whether each member's dues are for a new or renewal of membership.

Section 5 – Chapter Directors.

Chapter Directors, by nature of their three year term, are to provide direction and continuity to the Board of Directors. The Chapter Directors, elected by the members, and the outgoing President acting as a Chapter Director, shall each be assigned by the newly elected President to act as Chairperson pro tem for one of the four Standing Committees. (See Article VIII - Committees)

**Place your nominations for Officers and Awards at  
President@wpa-paine.org or 206-715-0005**

**Officers**

**President Greg Bell 206-715-0005  
president@wpa-paine.org**

**Vice President Les Smith 425-493-0451  
vice-president@wpa-paine.org**

**Secretary Steve Waterman  
secretary@wpa-paine.org**

**Treasurer Dave Van Horn 425-743-7638  
treasurer@wpa-paine.org**

**2008 Director Jim Morgan 425-353-2231  
board1@wpa-paine.org**

**2006 Director Susan Kennedy 425-741-7445  
board2@wpa-paine.org**

**2007 Director Gary Hill 206-523-2682  
board3@wpa-paine.org**

**Past President Kevin Kelly 425-418-3568  
past-president@wpa-paine.org**

**Chapter Awards**

**The purpose of the awards is to recognize and acknowledge to the membership and/or general public the performance of acts that tend to promote or advance the public image of our aviation interest and make them more appreciative as to the benefits aviation produces for the public even though they may not seem directly related.**

Nominations are coming in! Know someone you think deserves an award? Submit your nominations ASAP. Awards are presented during our Christmas Party.

Pilot of the Year. This is the highest award the Chapter may give. The nominations shall be a licensed pilot judged to have made outstanding contribution(s) to the advancement of general aviation throughout the past year. Recipient of this award shall be nominated for the State WPA Pilot of the Year competition.

Sponsor of the Year. To be awarded to the individual, group, or company who contributes most significantly in helping the Chapter to achieve its stated goals. This contribution should not be a financial one but rather should be based on the greatest contribution of effort, expertise, donated services or facilities and leadership training by the example it sets.

Sparkplug of the Year. This Award shall be given to the person or persons, who by their enthusiasm, talent, leadership ability and hard work inspire others to get involved and actively participate in the projects of the Chapter.

The Wright Stuff. The Wright Stuff Award shall be given in response to circumstances surrounding an incident that required outstanding flying or judgment. The criterion is that the aircraft must have been under power with a pilot in command.



The man who taught me to fly, Lewis, has remained a good friend of mine since we met in 1995. On Saturday he got married. Sandra and I have grown fond of him and are very happy for him. Lew and his future bride set out to have a destination wedding. They jetted around the globe looking for “the place.” They finally settled on Sun Mountain Lodge in Winthrop, a small town about 100 miles north east of Seattle – 100 miles in a straight line. By road, it takes nearly 5 hours and goes through some of the most ruggedly beautiful mountains and valleys in Washington State.

We took the plane OVER those mountains and valleys. As I was planning the flight, I thought over a couple issues. First, this is some of the most hostile territory in the state. There are no cities, no roads, no airports, not even any flat spots, just tall mountains, deep valleys, and steep ravines. Second, there were some tall mountains. And the highest one at 10,500 feet was nearly directly in our path. Third, we would be coming back at night. Fourth, there are flight paths that stay closer to civilization, and thus options in the event of something going awry, but that route takes you south to Seattle then east, and back north again. I’ve used that path in previous night flight.

I decided to take the twin engine Piper Seneca to speed the flight, allow for quicker climbs, and some redundancy in engines as we crossed the mountains.

Now, how do we get from the airport to the lodge? It is about 13 miles, too far to walk or bike in a suit or dress shoes. We called around and found Mountain Transporter offered a van service, but charged by the hour. And we would be at the wedding for several hours with the meter running. The lodge’s concierge was willing to pick us up and take us back, and get this, FOR FREE! The only catch was that the concierge got off work at 8:00 P.M. so we couldn’t stay much later than that.

The day of the wedding turned out to be a beautiful day for both the wedding and for flying. As I cleared Paine’s airspace, I called up Seattle Radio to open my flight plan, and then switched over to Seattle Center for VFR flight following. We continued to climb, leveling out at 11,500 feet. We were level for just a brief period when the controller asked when we planned to start our descent to Methow. Ahead I could see the ridge on the east side of Lake Chelan, and I had to clear that before I could start too much descending. Soon the lake was passing beneath us and I could see Stehekin out my window.

Rolling the trim wheel forward I started down over the ridge, picking the small town of Winthrop out of the golden brown valley in front of me. As we descended over the ridges and hills, we started bouncing on the thermals. I pulled the throttles back to 16 inches of manifold pressure and continued to descend. As we got to within 4 miles of the airport, we were still too high. I made a arcing left turn to the north, went over the ridge, and then turned south back towards Twisp in shallow right turn. We were finally coming in low enough that I could make final u-turn to the left to end up entering left down-wind over the hills on the east side of the airport. I extended the gear, and ran the pre-landing check-list. Flaps out, we touched down and rolled out. I turned around on the runway and taxied back to transient parking.

Exactly one hour after starting the engines, they were shut back down.

The wedding was beautiful. It was held on the bluff overlooking the valley to the north. Since we have been friends with Lew for so long, we have developed quite a few mutual friends. It was fun to see so many of them gathered together, celebrating in honor of Lew and his new wife Stacy. Eight o’clock came much too soon, and after a bit of coordination the Concierge drove us back down the hill to the valley below and to the airport. We stopped along the way to drop off some of the house-keeping staff that was carpooling with us. It was a little after 9:00 P.M. as I began the preflight for the trip home.

Funny how earlier in the day, I did not notice the moon was out. But now that the sun was set, so was the moon. And in a small valley with rapidly climbing terrain on either side, I was missing that moon. It was DARK. Before starting the plane I stood on the ramp and looked north and south. From the ground I could see the silhouette of the hills against the night stars. I could see the faint lights of the next city down the valley. I examined the charts and found the highest points near the airport. I planned my assault of the inky blackness.

*by Roger Weber* (editors note: this is an excerpt from Roger’s chronicles “Who Cares? Why I Fly”. There will be more to come.)

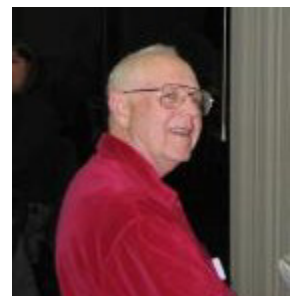


Gary Hill

### Jackpot, NV (06U)

On August 2, 2008 Dick Kinnier and I left for Jackpot Nevada in Dick’s Cessna 172. We flew to Baker City Or. on Sat. and stayed the night. On Sunday we left for Jackpot. On the ground the sky looked great. In the air however it was a different story. The smoke from the California wild fires had arrived into central Oregon and southern Idaho. After a smoky trip thru Oregon and Idaho we arrived at Jackpot. We had a cost of \$69 per night and 1 night free. Not a lot of people at the first of the week. Dick had a banana split breakfast. I wish that I had had a camera when he got it. On wed. we started back with a gas stop at Baker City and Yakima. The weather was OK but we had to go thru Stampede Pass via Lester to get to Western Washington. We had a great trip.

*by Gary Hill*



Dick Kinnier

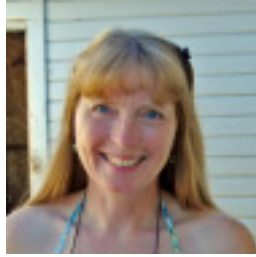
# News Briefs

## Jim Wilkinson Retires

September 30th marked Jim Wilkinson's retirement as General Manager of Castle & Cooke Aviation, Everett. Jim has been on the Airport since 1969 when he went to work for Jet Air. In 1971 he purchased the business and grew it for nearly four decades. Over the years Fliteline Services has provided top notch aviation support services to general and corporate aviation, the military, and various airlines from around the world. Fliteline Services became Everett Jet Center two years ago and was recently acquired by Castle & Cooke Aviation Services. The Airport of Choice will certainly miss Jim. Congratulations to you. Let's also congratulate Terry Wilcoxson for his promotion to General Manager of Castle & Cooke. Terry has worked with Jim for over 30 years, most recently as the Operations Manager of Castle & Cooke Aviation.



**Dave Wheeler and Janis Chastain**



Congratulations to Dave and Janis. On September 27th, at the Northwest Aviation Center, their recent union was celebrated with good food and good music.



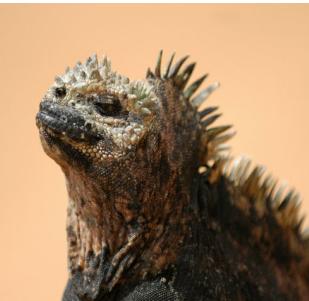
## The Christmas Party.

Sign up now. **We only have room for eighty great pilots, spouses and guests.** We have reduced from last years cost. We need to cut off the reservations on December 1, 2008. Reservation application is on page 3 of this newsletter

ELF and crew.

## October Meeting

brought over 50 of us back to Sno-Isle Skill Center. Jules Bresnick won the free dinner. Helga presented us with another entertaining and inspiring program. We had the largest number of new attendees, definitely an indication of the quality and interest in the program on the Galapagos Islands, where prehistoric dragons rule. The islands were discovered in the 1500's and designated a national park of Ecuador in 1959.



## GA Day May 16th, 2009 Committee

The core committee members met for the first time on October 3rd. Since there are possible changes coming to PAE which will affect the Terminal Ramp, the event location is changing to the South Ramp by the Flying Heritage Collection. The mission of our meeting on the 3rd, was to determine what committee chairs are required to run the event. So, we are now recruiting for several committee chairs: food and entertainment chair and a non-profit vendors chair. Our next meeting will be at the Airport Office Conference room at 6 pm on Thursday, October 30th. We should be adjourning the meeting by 8 pm. Please attend if you are interested in a committee chair position. If you cannot attend, and are interested, contact Steve Waterman at Secretary@wpa-paine.org or call Stephanie Allen at 425-349-9802.

## September 13th flyout

to Shelton for the Port's 60th birthday. 213 Young Eagles flown, over 50 aircraft on display, music, food, hotrods, and lots of stuff to buy.





# Paine Field Chapter WPA *Christmas Party*

Friday, December 12th  
6:PM No Host Bar, 7:00 PM Dinner  
Shawn O'Donnell's Restaurant & Irish Pub  
122 128th St SE, Everett  
www.shawnodonnells.com

## \$35 per person

Prepayment required by December 1st

Buffet of London Broil, Garlic Chicken, Wild Rice Blend, Garlic Mashed Potatoes, Seasonal Vegetables, Caesar and Garden Salad, Irish Soda Bread, Dessert and Soft Drinks.

No Host Bar.

Door Prizes, Entertainment and just *plane* fun!



Contact Name: \_\_\_\_\_  
Phone #: \_\_\_\_\_  
Email: \_\_\_\_\_

**Please bring an unwrapped gift for Toys for Tots**

Attendees Names:  
1. \_\_\_\_\_  
2. \_\_\_\_\_  
3. \_\_\_\_\_  
4. \_\_\_\_\_  
5. \_\_\_\_\_



Make Checks Payable to WPA-PAE. Please complete form and mail to:  
Jan Kinnier 10128 240th Place SW, Edmonds, WA 98020, 206-546-3634



**Next Meeting**  
**November 7th**  
**Sno-Isle Vocational Skill Center**  
**9001 Airport Road**  
**Everett, WA 98201**  
**Catered dinner (\$10) at 7 P.M.,**  
**Meeting at 7:45 P.M.,**  
**Program at 8:00 P.M.**  
*RSVP required for Dinner*

**The Paine Flyer**  
**Snohomish County Airport Paine Field**  
**3220 100th Street SW**  
**Everett, WA 98204**  
**ADDRESS SERVICE REQUESTED**

PRSRT STD  
 U.S. POSTAGE PAID  
 EVERETT, WA  
 PERMIT NO. 336

- Nov. 7, General Meeting, @ Sno-Isle: Chapter Year in Review, Elections
- Nov. 8, Owner Maintenance Seminar
- Nov 13th Board Meeting
- Dec 11th Board Meeting
- Dec. 12, Chapter Christmas Party
- Jan 8th Board Meeting
- Jan 9th General Meeting, Paine Field Airport Update
- Feb 6th General Meeting, Excavating Glacier Girl from the Greenland Icecap
- March 13th The Flying Heritage Collection

**CLASSIFIED ADS**      free to WPA members  
 adds will run for 2 months unless otherwise requested



Black enamel, gold accents, beveled mirror tops: Coffee table, 2 end tables, 2 lamps with black pleated shades. \$100 for all, call Stephanie 425-349-9802

**Lamps sold**  
**make an offer on**  
**the rest**

**Wanted: A few good people that can get things done. See page 2 for officer positions**

**1976 C182P** N1547M 3499 TTAE 1439 TSOH prop 11 TSNEW New Cleveland wheels and brakes. I am the third owner since new. Great cross country aircraft. Complete logs and no major damage. Located at PAE Everett, WA \$69,000.00 Ken 206-914-8373

**WPA STORE**

Name Badges \$5.00  
 See our web page for a selection of logo shirts  
 e-mail: store@wpa-paine.org

**Aircraft for Sale**

**Sweet, Sweet deal!**

1977 Commander 112TCA Turbo, 1574 TT, 617 SMOH Hartzell Tri Blade (13TT)  
 Collins digital Nav/Coms w/GS, ADF, Century I autopilot, Audio Panel, Intercom, Loran  
 8+ in and out. Complete set of logs and manuals. Always hangered.  
 There were only 42 Rockwell Commander 112TCAs manufactured. This aircraft is a low time, comfortable wide body, high flier, with two door ease of access. \$87,000 obo.

Beautiful 1964 C-172. Near new paint/interior. Plenty of extras. Full IFR. 600 SMOH 300 STO. Excellent paint and interior \$44,500

**Avionics for Sale**

King KR87 ADF \$750

**BFRs in your plane. \$75**

**Contact: Jim Smith CFII**

**Phone: 425-218-2150**

**E-Mail: [JimSmithCFI@msn.com](mailto:JimSmithCFI@msn.com)**

**Community Hangar space** available in 201 Call Tim at 678-472-4633

**1973 Cardinal FG - 50% share for sale. \$40,000**

Extensive refurb in 2001, including Apollo Avionics stack, Engine monitor, Paint, Interior plastic, windows, leather interior.  
 Contact (seller) Pat Franzen, 360-929-1118 or (remaining partner) Les Smith, 425-870-2287