



Contents

President's Message	1
Officer contact	2
Future Programs	2
LATS	3
Science of Flight	5
Calendar	6
Classifieds	6

1st newsletter since 03/09?

Then we have not received your 2009 dues.

go to www.wpaflys.org
to pay online
or contact
treasurer@wpa-paine.org

No RSVP Required for August

Next Newsletter deadline:
August 17th
Editor@wpa-paine.org
submission specs available on
our web site

President's Message by Les Smith

Tell me – is it really July already? It must be. I spent a couple days up at the Arlington Fly In, so I'm pretty sure it really is July. For most of the week, Arlington attendees enjoyed the warm but temperate weather the Pacific NW can muster for summer. That means a light jacket by the time the sun goes down and the outdoor movie starts. Reports are that both the RV campers and the airplane campers were down in number a bit, so whatever recovery the optimists (bless their hearts; we need them) are reading wasn't playing out at the show. The daily air shows, though, were as good as ever, providing a great reason to get a crick in your neck from staring skyward for a couple hours.



The WPA booth at the show enjoyed some success with some new sign ups along with some renewals. Thanks to Susan Kennedy, Will Silva, Jim Burke, Steve Waterman, and Gary Evans for manning the booth and making a presence for WPA at the event.

Another sign of July is the pile of camping gear already set out for Oshkosh. I'll either have to whittle it down a bit to allow more fuel or else we'll be making refueling stops every 90 minutes or so. The NOTAM is printed, the charts are all prefolded. Now let's see what the weather brings.

The pace of news items on security and other TSA antics seems to have slowed a bit. Enjoy the lull, revel in the freedoms we enjoy around flight, and keep a vigilant eye posted for what may yet come at us. Perhaps this lull is a result of folks simply taking advantage of the good weather and getting out and flying more. Hope that's the case, and that you are taking advantage of the longer daylight hours.

Be safe out there!



NEXT MEETING August 7th Movie Night
Change of Location
EVCC Aviation Bldg 80, Paine Field
Potluck Dinner at 7 P.M.,
Meeting at 7:45 P.M.,
Movie at 8:00 P.M.

Bring a Dish to Share and what you want to drink.

Flyboys - Inspired by a true story. The adventures of the Lafayette Escadrille, young Americans who volunteered for the French military before the U.S. entered World War I, and became the country's first fighter pilots.

July Meeting Review: Thanks to Janis and Dave Wheeler for the hospitality of their hangar for this past Saturday's General Meeting/Hangar gathering. Actually, Dave was under the weather, so a special thanks to Janis. (And hope that Dave is feeling better by now). We moved the meeting by a day to take advantage of the Arlington event. Some watched the air show from the Wheeler's hangar and many more made their way around from the airport west side after the air show for a nice catered meal. Yours truly stuck around AWO for the Balloon Glow. With lightning way off to the west, and the gas burners lighting up the balloon envelopes, it was a great show.



Hi from Langley Airpark

I'm one of the WPA members based over here on South Whidbey Island at Langley Airpark (W-10). We have a couple of new developments over here that might make W-10 an attractive "Fifty dollar hamburger" for other WPA members.

First, we now have "Courtesy Bikes" on the field in two locations which can provide an easy way to go into town for shopping or a meal. The bikes, with helmets, are located at the north end green hangar and at Mukilteo Coffee Company at midfield. Signs point the way to the bikes, which are secured with a combo lock for which the combination is the Unicom Frequency of W-10 (122.9) Signs point the way to town 2.5 miles away.



Second, Mukilteo Coffee Company located on the field now has a full service cafe along with their coffee business. They serve breakfast and lunch and are open from 0800 until 1600 Monday through Saturday. They are closed on Sundays and holidays. They can be contacted at (360) 321-5270 or at www.Mukilteocoffee.com. There are signs for aircraft parking and directions to the cafe at midfield.

Happy Flying!

Fred Lundahl

Langley Chamber of Commerce and PAE Chapter member

September 11th Hangar Party

Catered by Straydogs Catering
Your favorite libation compliments of WPA
This year we will be in Russ Keys' North Corporate Hangar at PAE



RSVP required by August 31st \$15 per person
Due to catering requirements, no RSVP will be accepted After August 31st.

Menu:
BBQ Pork Sliders or Sant Fe Chicken
Mixed Greens Salad with Assorted Dressings
Spinach Nut Salad
Assorted Cookie Tray
Assorted Beverages

Officers

President Les Smith 425-870-2287
president@wpa-paine.org

Vice President Dave Wheeler 425-238-7696
vice-president@wpa-paine.org

Secretary Marilyn Fries 425-885-4212
secretary@wpa-paine.org

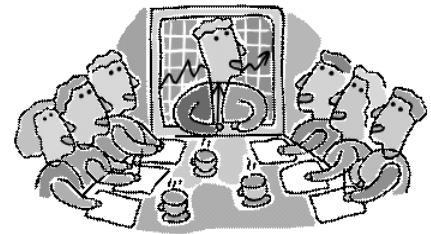
Treasurer Greg Bell 206-715-0005
treasurer@wpa-paine.org

2008 Director Jim Morgan 425-353-2231
board1@wpa-paine.org

2009 Director Janis Wheeler 425-367-9955
board2@wpa-paine.org

2007 Director Gary Hill 206-523-2682
board3@wpa-paine.org

Past President Greg Bell 206-715-0005
past-president@wpa-paine.org



October Board Meeting and Planning Meeting

Thursday, October 8th

@ Spiro's Pizza & Pasta

11815 Mukilteo Speedway # 100, Mukilteo

No Host Dinner and Bar
Limited seating

The Board encourages members that have an interest in volunteering or ideas on events, flyouts, seminars and/or programs to attend.

RSVP will be required, details to come.

Washington Aviation Planning Council Releases Statewide Aviation Recommendations

After almost two years of deliberations, the Washington Aviation Planning Council has released its final statewide aviation recommendations. To read the entire Council Report, which includes the full list of recommendations, visit www.wsdot.wa.gov/aviation/LATS. The Aviation Planning Council, as directed by state legislation (ESSB 5121), was appointed by Gov. Chris Gregoire in July 2007 as part of the Long-Term Air Transportation Study (LATS). The Council's purpose was to use LATS Phases I and II technical findings, and include public input, to determine:

- How best to meet commercial and general aviation capacity needs.
- Which regions of the state are in need of improvement regarding the matching of existing, or projected, airport facilities and the long-range capacity needs at airports within the region expected to reach capacity before 2030.
- Recommendations regarding the placement of future commercial or general aviation facilities to meet the need for improved aviation planning in the region.

The Aviation Planning Council's recommendations are based on careful review of the LATS technical data, extensive dialogue with aviation system stakeholders and a thorough and transparent public involvement process. The recommendations are also aligned with Moving Washington, WSDOT's mobility program that utilizes three strategies: adding capacity where appropriate, operating the system more efficiently and managing demand through more alternatives and choices

Some highlights of the Council's findings include:

- No immediate capacity constraint exists at any airport in Washington State today.
- Future capacity constraints will exist within the time frame of this study (2030), primarily in the Puget Sound Region.
- Washington's aviation system is threatened by encroachment from land uses that are incompatible with aviation operations, and existing land use laws are inadequate.

Some highlights of the Council's recommendations include:

- The State should place a priority of protecting and maximizing the efficiency of the airport system we already have in place before we consider the development of new airports.
- Decisions about the placement or expansion of airports must be primarily a regional and market-driven decision.
- The State role as a steward of the aviation system includes providing adequate land use protections, recommending system improvements, as well as strategic investments to support and maintain critical aviation facilities throughout the state.
- If it is determined, at some time in the future, that future demand cannot be met at nearby airports and there is no interested sponsor to undertake such a study effort, the State should undertake siting studies for new airports.

The Council's recommendations were delivered to the Governor, Legislature, Transportation Commission and regional transportation planning organizations on July 1, 2009.

NOTAM! PAE Runway Closures

Friday, July 31 (9 p.m.) – Thursday, August 6 (8 a.m.): Runway 16R-34L and Runway 11-29 will be closed continuously for pavement rehabilitation.

· **Thursday, August 6 – Wednesday, September 9 a.m.** The north 2010' of runway 16R-34L will be closed, leaving 7000' of usable runway, for a total reconstruction of new concrete pavement of the north 1,000 feet of runway.

· **Thursday, August 6- Wednesday, September 9** Runway 16R-34L will be closed from 9 p.m. to 7 a.m. each night Monday – Friday for runway grooving and reinstalling runway centerline lights.

· **Friday, September 4 (9 p.m.)- Wednesday, September 9 (8 a.m.):** Runway 16R-34L will be closed continuously to finish the north end construction, install touchdown zone light cans and construct the new Alpha 2.5 intersection.

· **Wednesday, September 9 – Wednesday, September 30:** Runway 16R-34L will be closed from 9 p.m. to 7 a.m. Monday-Friday for reinstallation of the centerline lights and pavement grooving.

Editor's Note: Listen to ATIS even after the Tower is Closed, you may be in for a surprize if you don't!



★ **LIGHTHOUSE** ★
FESTIVAL
Mukilteo  *Washington*

September 11, 12 & 13

Family Entertainment | Art Booths | Food Booths | Parade | Fireworks
Microbrew/Wine Garden | with Live Entertainment Friday & Saturday Night
Lighthouse Tours | Professional Skate Board Demos | Fly Over Show
Salmon Bake | Children's Activities & Fudge Carving Contest

Run-A-Muk, August 29th, 2009

Shuttle Buses Available

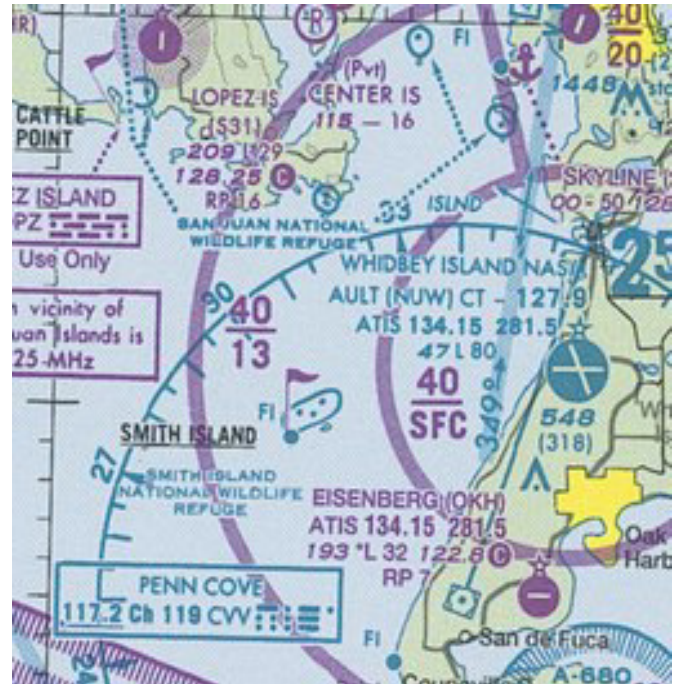
The Festival will be held at Mukilteo Lighthouse Park.

Photo by: Terry Preshaw

Design by: ronhansen.com

get info at: www.mukilteofestival.org

This ad is made possible by assistance from the Snohomish County hotel-motel tax fund. MLFA is grateful for significant financial support from the city of Mukilteo and the Port of Everett.



Wes Lupien Airport, Oak Harbor now owned by Joel Eisenberg and Air International. Now known as Eisenberg Airport (OKH), this airport has plans. They have a sealing machine and plan to start work on the runway after Arlington, with plans for hangars. Also, they now have 92 Unleaded, certified ethanol free mogas available at OKH. Current price is \$3.24 per gallon. The airport manager tells me they've bought it direct from the Anacortes refinery and the papers stipulate "not for road use". If there's enough demand they'll keep it going. Questions can be addressed to the airport manager, Pete Morgan, at 360 929-6802.



The Science of Flight for Teachers

A post-graduate, professional development class for educators, has been supported by our chapter and other local pilots (notably the Harvey WPA Chapter, too) for the past 8 years. In that time, over 125 teachers have been exposed to the exciting world of aviation - and have carried that excitement back to the students in their classrooms. Teachers from all grade levels have participated and many have stayed in touch to share the lessons and special events they have organized as a result of their learning. With an average class size of 30 students per elementary teacher and 150 students per secondary teacher, our program has impacted the lives of over 11,000 students.

The teachers are shown demonstrations and experiments that they and their students can perform to illustrate some of the principles of flight. We cover Newton's three Laws of Motion, Bernoulli's Principle, the four forces of flight, the three axis, control surfaces, navigation, airspace, communication and more... - it's a very full week.

Career awareness has become a huge part of the program. Teachers hear from visiting professionals within the aviation field, in addition to taking field trips to local area aviation-related industries. Aviation fields are represented by air traffic controllers, avionics technicians, A&P's, airport fire personnel, FBO representatives, aircraft restorers, airline dispatchers, and pilots, among others.



The absolute high point of the week comes with the Monday "First Flights" that volunteer pilots give to the teachers. Most have never even stood next to a small GA aircraft, let alone having flown in one. The most consistent measure of success of the program has been the ear-to-ear smiles and excitement when the teachers come back from their first exposure to the world we live in every day. It is that excitement that they take back to their students. And it is that excitement that will inspire some young person sitting in a classroom to turn their attention to aviation and who may take our place in the future

by Gary Evans

Help needed for "First Flight"

The "Science of Flight for Teachers" is a "go" for this year again - the 8th year of the program. As is our tradition, we give each teacher an introductory flight or two of 20 to 25 minutes. This year, we'll need help on the first two Mondays of August - August 3 and 10. We'll meet at the site of the old Jet Deck restaurant, near the fuel pumps and Regal Air at 1:15 in the afternoon.

Because of recent rulings regarding charitable flights by the FAA, pilots should bring evidence of a current medical, pilot's license, aircraft annual and insurance.

The support by our local pilots has been incredible over the years, as the program represents a very positive way to present the world of GA to our community. We would appreciate any help you can give this year.

Please contact Gary Evans at AB7RK@aol.com if you are able to help out.



The Paine Flyer
Snohomish County Airport Paine Field
3220 100th Street SW
Everett, WA 98204
ADDRESS SERVICE REQUESTED

PRSR STD
 U.S. POSTAGE PAID
 EVERETT, WA
 PERMIT NO. 336

NEXT MEETING
Change of Location
EVCC Aviation Bldg 80,
Paine Field
Potluck Dinner at 7 P.M.,
Meeting at 7:45 P.M.,
Movie at 8:00 P.M.
Bring a Dish to Share
Movie Night
August 7th

August 13th Board Meeting
 September 10th Board Meeting
 September 11th Hangar Party
 October 8th Board Meeting and Planning Meeting
 October 9th General Meeting, National Air Tour

CLASSIFIED ADS free to WPA members
 adds will run for 2 months unless otherwise requested

WPA STORE
 e-mail: store@wpa-paine.org
 Name Badges \$6.00
 See our web page for a selection of logo shirts

Cessna 172 needed for flight school. Please email dave@nwc.aero or call 425 238-7696 for details.

Nose wheel fairing off of C182, ready for finishing work and paint. With hardware. Make an offer. 425-349-9802



Beautiful LOW TIME 1977 Cessna 182 Skylane. This 182 has only 1536 hours Total time with only 142 hours since complete top overhaul. The 182 has every bell and whistle and has a fully loaded avionics package including 2 ea. KX 155's and a S-Tec 60 autopilot coupled to a KLN 89B GPS. It also has new paint and interior. My uncle has given up flying and wants to sell it for \$ 110,000. Call me at 360-659-4323 or e-mail at skyranchpilot@yahoo.com for spec sheet.

Blue Skies, Gregg Ortega

Temporarily lost medical...must sell
 Beautiful 1964 Cessna 172. Near new paint and cloth interior.
 Will reduce price to \$37,000 if sold before June 30th
 Full IFR with GPS, 600 SMOH, fresh annual
JimSmithCFI@msn.com , 425-774-8497 (home)
 425- 218-2150 (cell)

2005 Glasair Sportsman 2+2
 Sportsman 2+2 with 1250 lbs useful load and four seats. Equipped with a full Garmin stack, IFR aircraft with auto pilot, full engine monitoring and 4 place intercom, Lycoming 0360 engine with only 90 hours on it. Has Hartzel 80" prop, panel breakers and engine mounts for amphib floats. A beautiful custom paint job, blue and white. Erik 206-498-5608.

WPA exists only because of members giving back to the chapter by volunteering. Opportunities are now open for you to volunteer!

Volunteer Position open immediately:
 Dinner Meeting Coordination
 Contact BOD@WPA-Paine.org

Position Filled

Volunteer Position Available: General Aviation Day Chair, start immediately. Skills required: project management, good interaction with people, prefer someone familiar with the event. Contact Bod@WPA-Paine.org