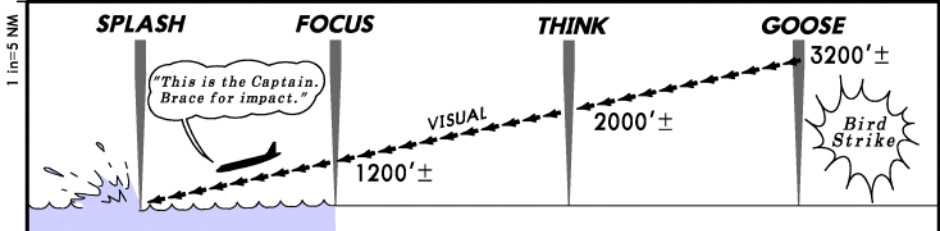
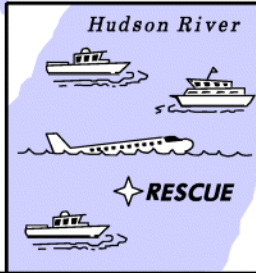
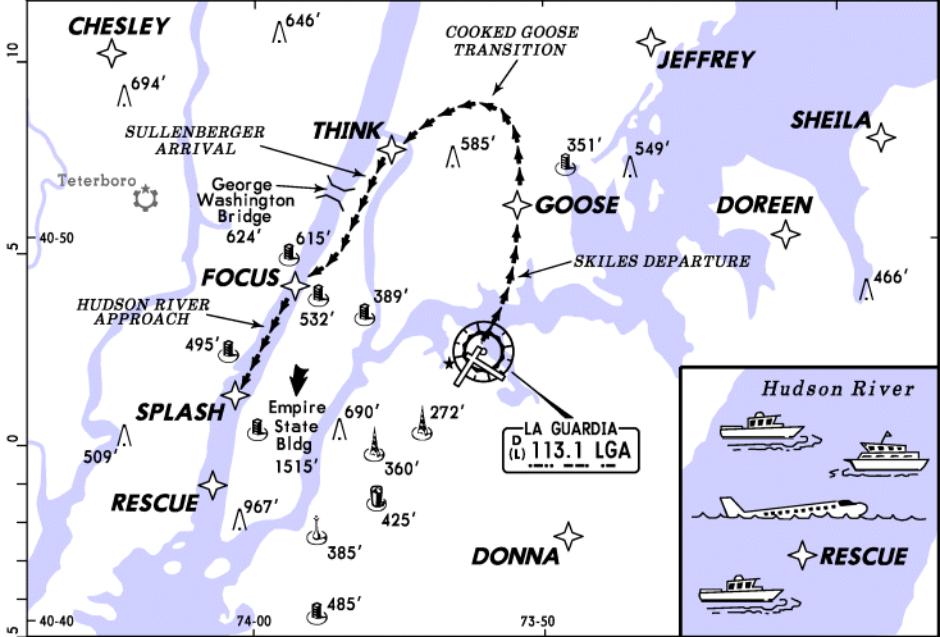


D-ATIS Arrival 125.95	NEW YORK Approach (R) 120.8	LA GUARDIA Tower 118.7	Ground 121.7	Emergency 121.5
VFR ONLY	Final Apch Crs HUDSON RIVER	Minimum Alt FOCUS (All You Can Get)	MDA(H) 0' (You're Committed)	Apt Elev 22' TDZE WET
MISSED APCH: None (ONLY ONE CHANCE). NOTE: After water landing, oversee evacuation of ALL SOULS from airplane. Float via HUDSON RIVER to RESCUE point. Once everyone is SAFE aboard rescue boats, secure passenger list and double check cabin. Captain is last to exit. Give THANKS.				U.S AIRWAYS Flight 1549 January 15, 2009 Airbus A-320 150 Passengers + 5 Crew 155 Survivors
1. SAAAR PROCEDURE: Special Aircrew, Airmanship, and Ability Required. 2. Duration of flight from Take-Off to Splashdown approximately 5 minutes. 3. Save soggy shoes and wet jacket. Donate to the EAA Young Eagles program.				



Gnd speed-Kts	90	100	120	140	All SOULS OK? Float On HUDSON RIVER To RESCUE Point Check All SAFE On Boats Give THANKS
VERTICAL ANGLE	Best You Can Get				
THINK to SPLASH	Comes Way too Soon				

STRAIGHT-IN LANDING HUDSON RIVER		US AIRWAYS FLIGHT 1549 CREW			
1 ETOPS APPROACH MDA(H) 0' (You're Committed)		Flight Deck		Cabin Crew	
A	VFR Conditions Only	Captain CHESLEY SULLENBERGER, III United States Air Force Academy(1973) US Airways(PSA Airlines)(1980) 35 Years Experience Total Flight Hours 19,663		Flight Attendant SHEILA DAIL US Airways(Piedmont Airlines)(1980) 28 Years Experience	
B		First Officer JEFFREY SKILES US Airways(USAir)(1986) 22 Years Experience Total Flight Hours 15,643		Flight Attendant DONNA DENT US Airways(Piedmont Airlines)(1982) 26 Years Experience	
C				Flight Attendant DOREEN WELSH US Airways(Allegheny Airlines)(1970) 38 Years Experience	
D					